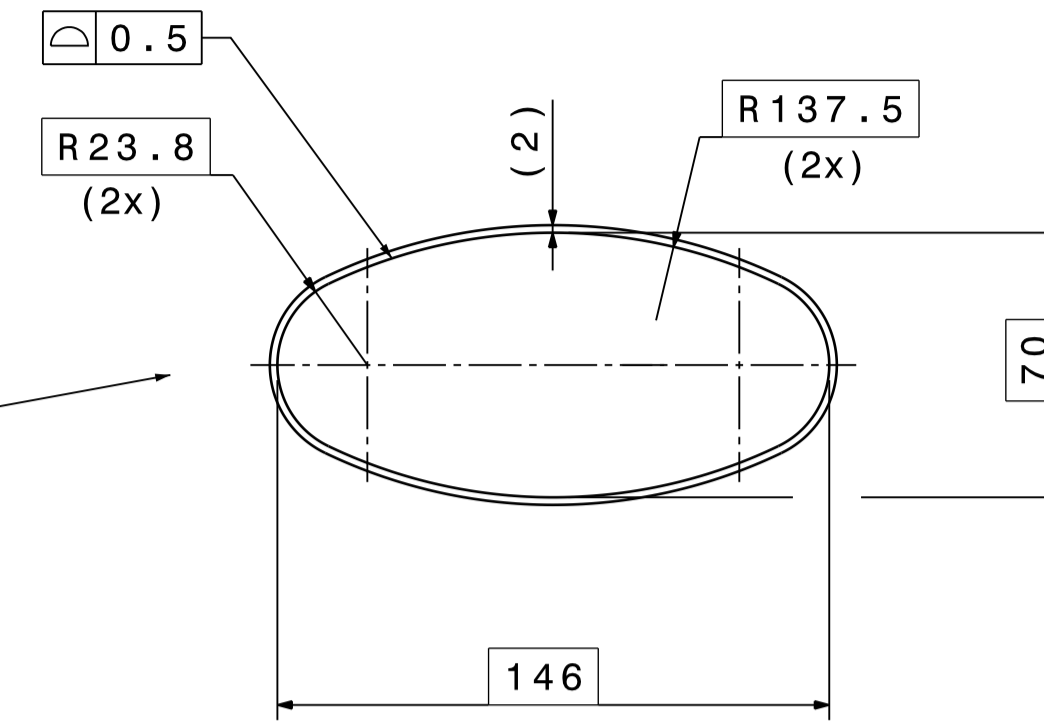
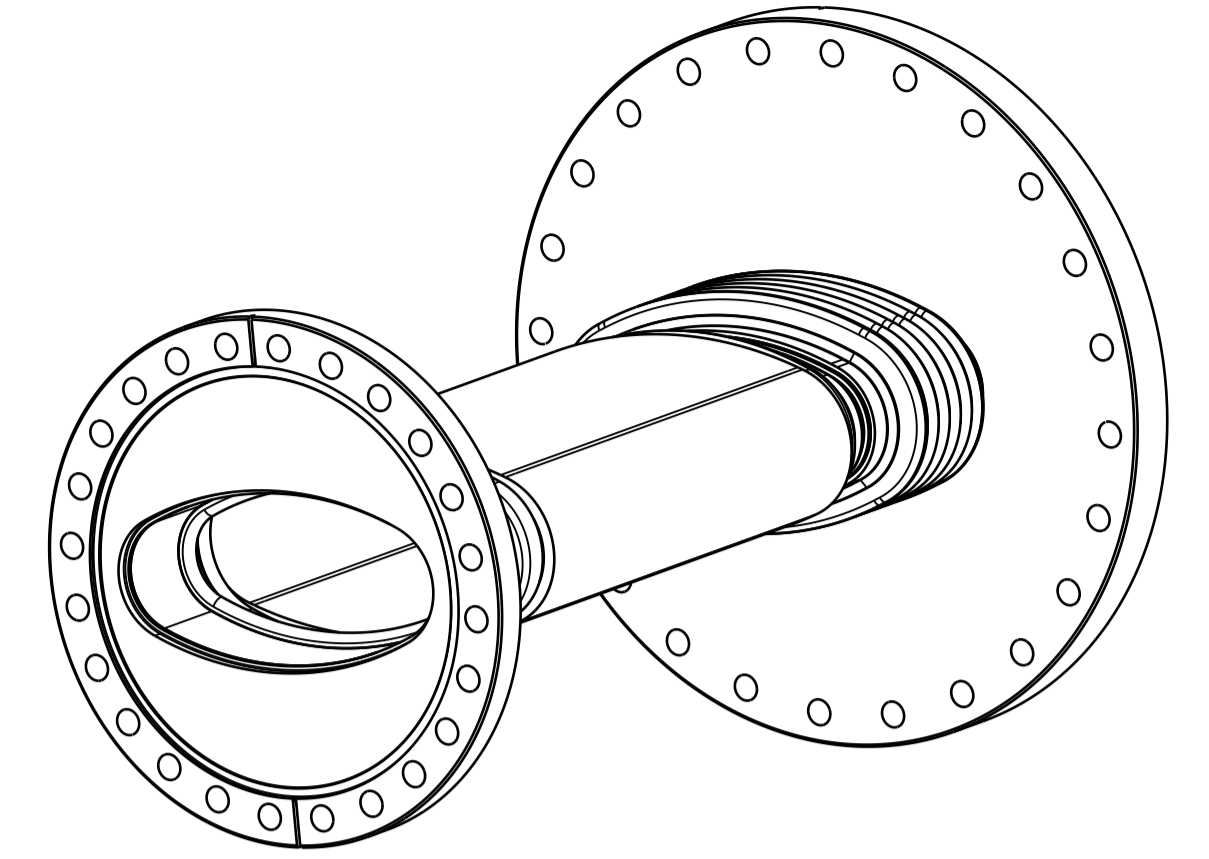


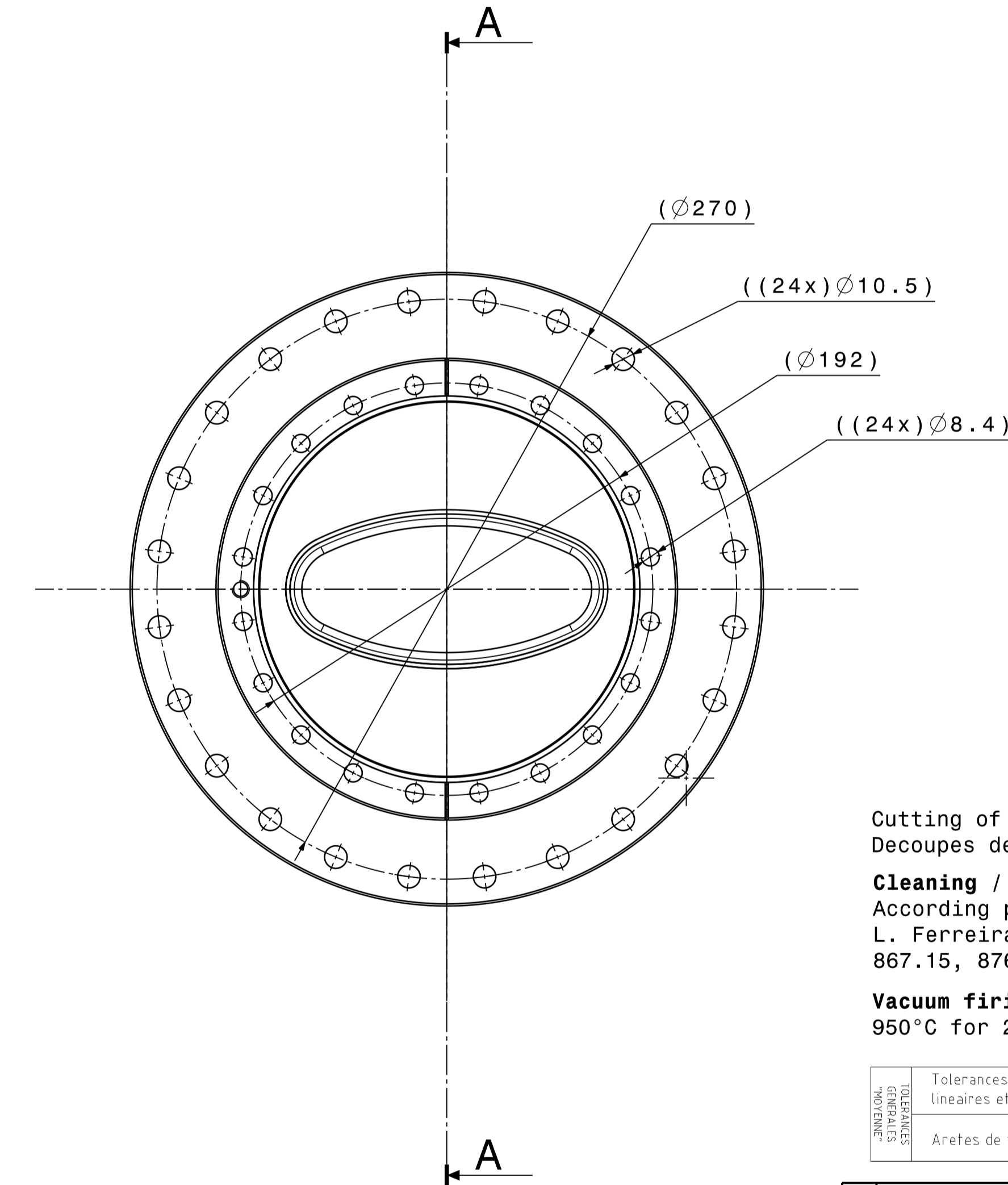
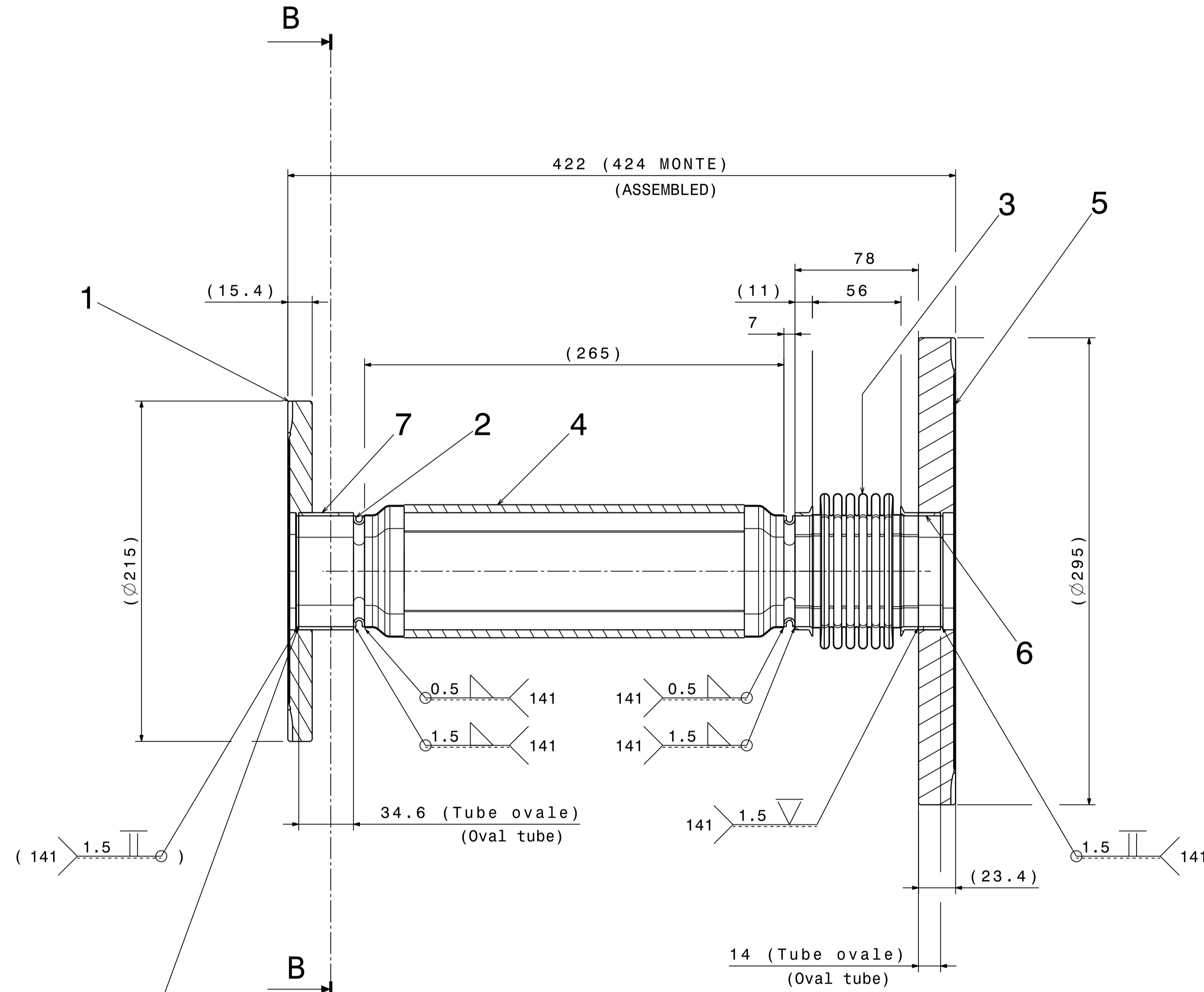
Section B-B



Valable pour les repères 5 et 6
Valid for the marks 5 et 6



A-A



Cutting of the material : Ra 3.2
Decoupes des matieres

Cleaning / Nettoyage
According procedure / Suivant procedures de
L. Ferreira, CERN Reports : Procedure Qualite 867.11,
867.15, 876.16 (2003)

Vacuum firing / Traitement Thermique
950°C for 2H / 950°C pendant 2H

TOLERANCES GEOMETRIQUES LINEAIRES ET ANGULAIRES	ISO 2768-mK-E	Ra 3.2
ARETES DE FORME NON DEFINIES	ISO 13715	

QUANT.	DESCRIPTION	POS	MAT.	OBSERVATIONS	REF. CERN
1	SHEET TH. 2mm	7	ST. STEEL	370x45x2	44.59.32
	TOLE EP. 2mm		316LN		520.1
1	SHEET TH. 2mm	6	ST. STEEL	370x25x2	44.59.32
	TOLE EP. 2mm		316LN		520.1
1	FIXED FLANGE Ø295	5		E43.1264	
	BRIDE FIXE Ø295				
1	CERAMIC CHAMBER	4		E43.1504	
	CHAMBRE CERAMIQUE				
1	BELLOWS ASSEMBLY	3		PSP00394	
	ENSEMBLE SOUFFLET				
2	PART OF CONNECTION	2	ST. STEEL	LEIVCDFH0003	
	PIECE DE LIAISON		316LN		
1	FIXED FLANGE Ø215	1		LEIVCDFH0002	
	BRIDE FIXE Ø215				

A souder au montage après introduction de la chambre dans le dipole horizontal. Voir détail LEILMDFH0001 et 0002.

To weld during assembling after mounting vacuum chamber into horizontal dipole. See drawing LEILMDFH0001 and 0002.

Vacuum Chamber for SPH (fast horizontal dipole corrector magnet)		ECHELLE SCALE	DES/DRA.	ACROTECNA	2006-09-14
DIPOLE EQUIPPED VACUUM CHAMBER DIPOLE EQUIPE CHAMBRE A VIDE		1:2	CONTROLLED		
			RELEASED		
			APPROVED		
REPLACE/REPLACES			LEIVCDFH0001		
NON VALABLE POUR EXECUTION NOT VALID FOR EXECUTION		GAC		LEIVCDFH0001	1

ORGANIZATION EUROPEENNE POUR LA RECHERCHE NUCLEAIRE
 EUROPEAN ORGANIZATION FOR NUCLEAR RESEARCH
 DESIGN, DRAUGHTING, TOLERANCES, TOLERANCES
 DRAWING, RUGOSITY, TOLERANCES
 ACCORDING TO ISO STANDARDS
 PROJECTION