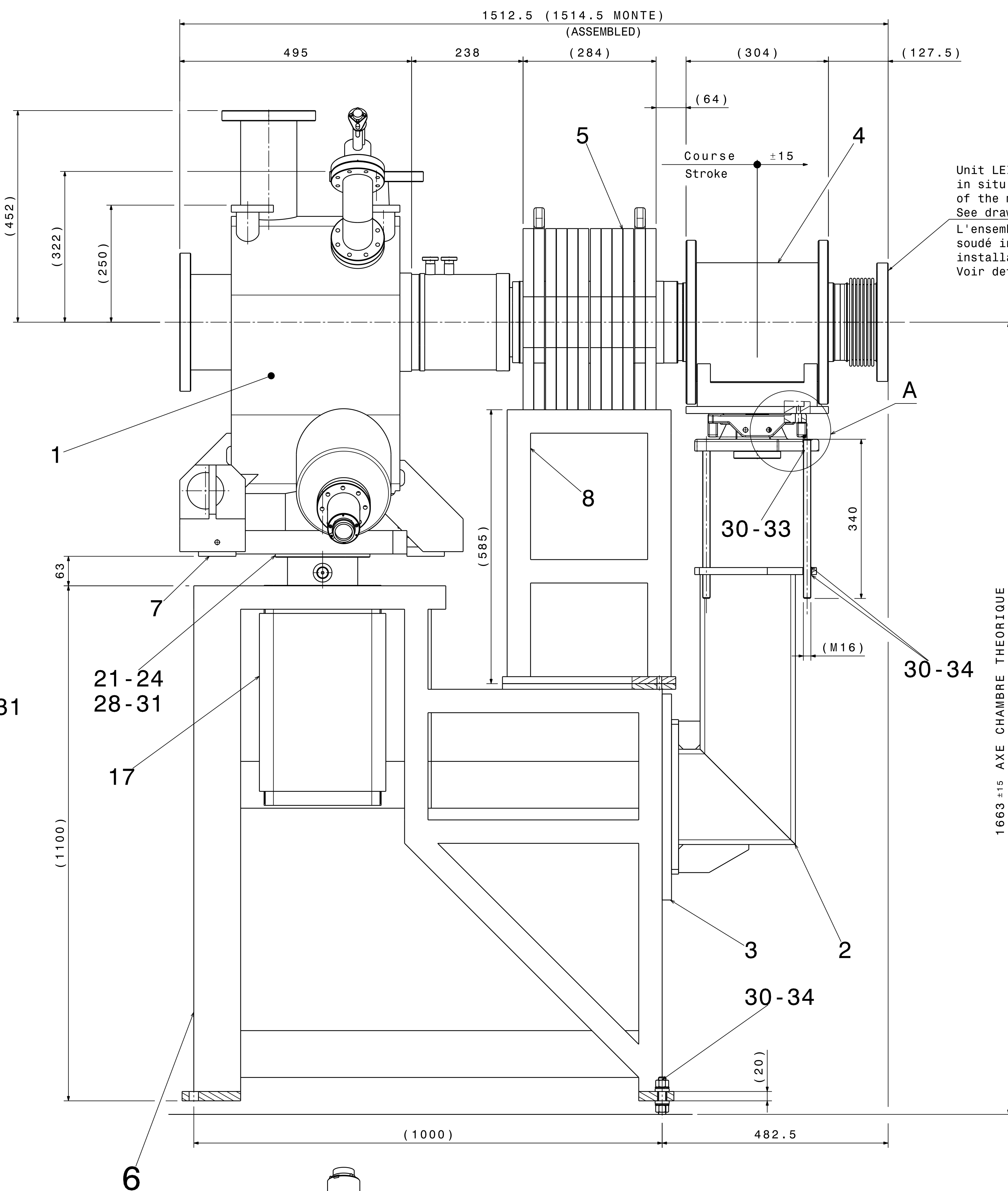
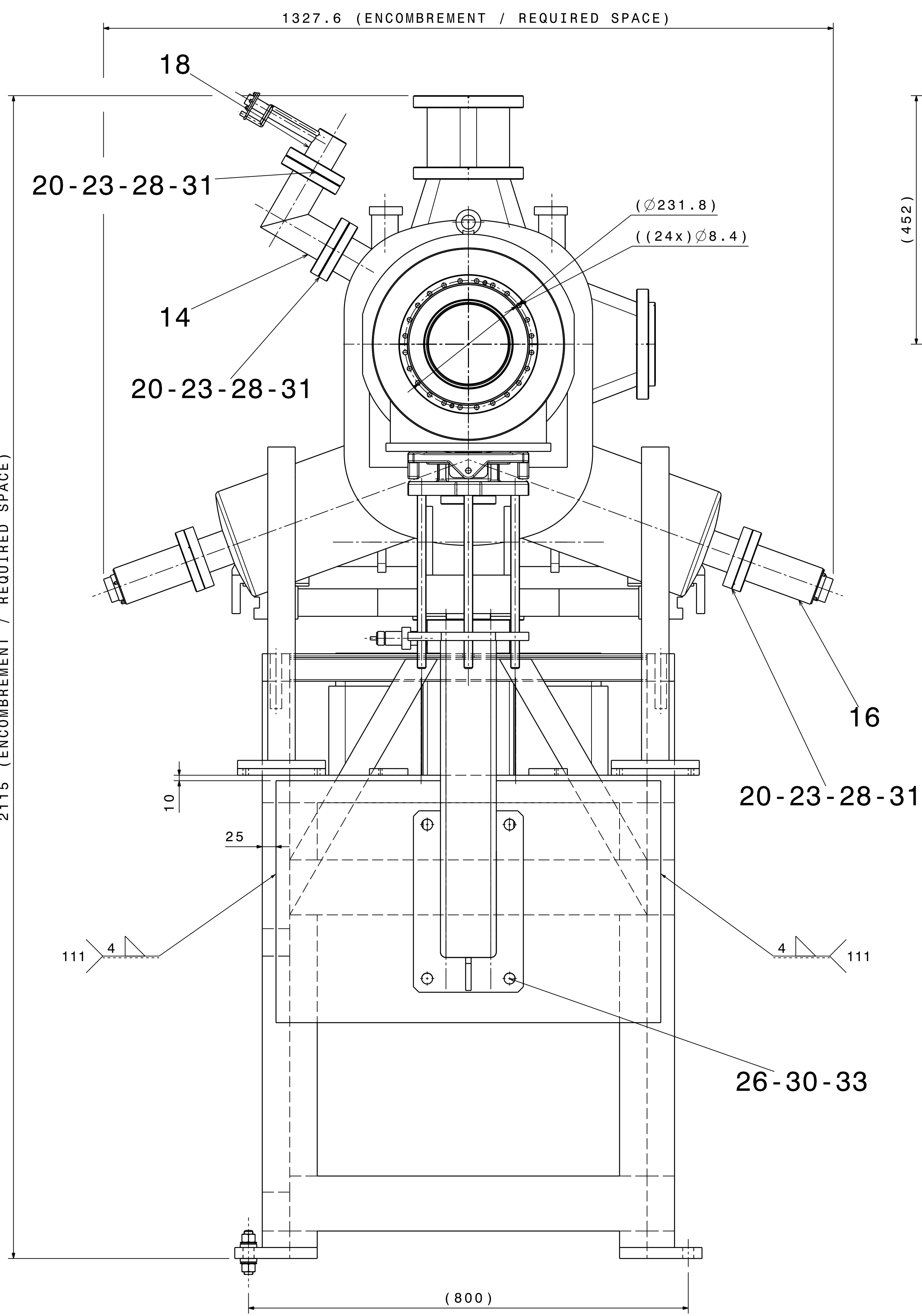
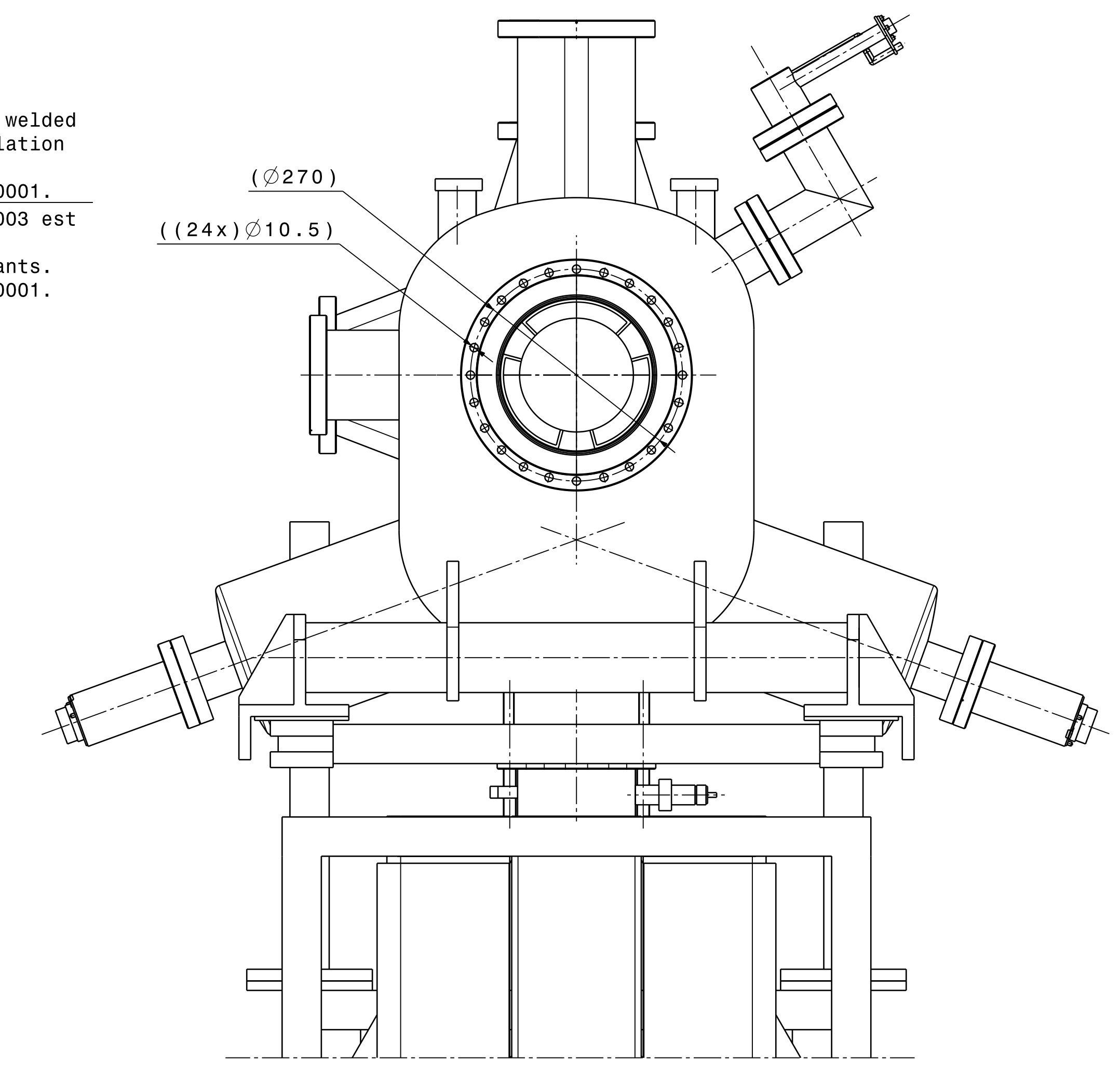


2115 (ENCOMBREMENT / REQUIRED SPACE)

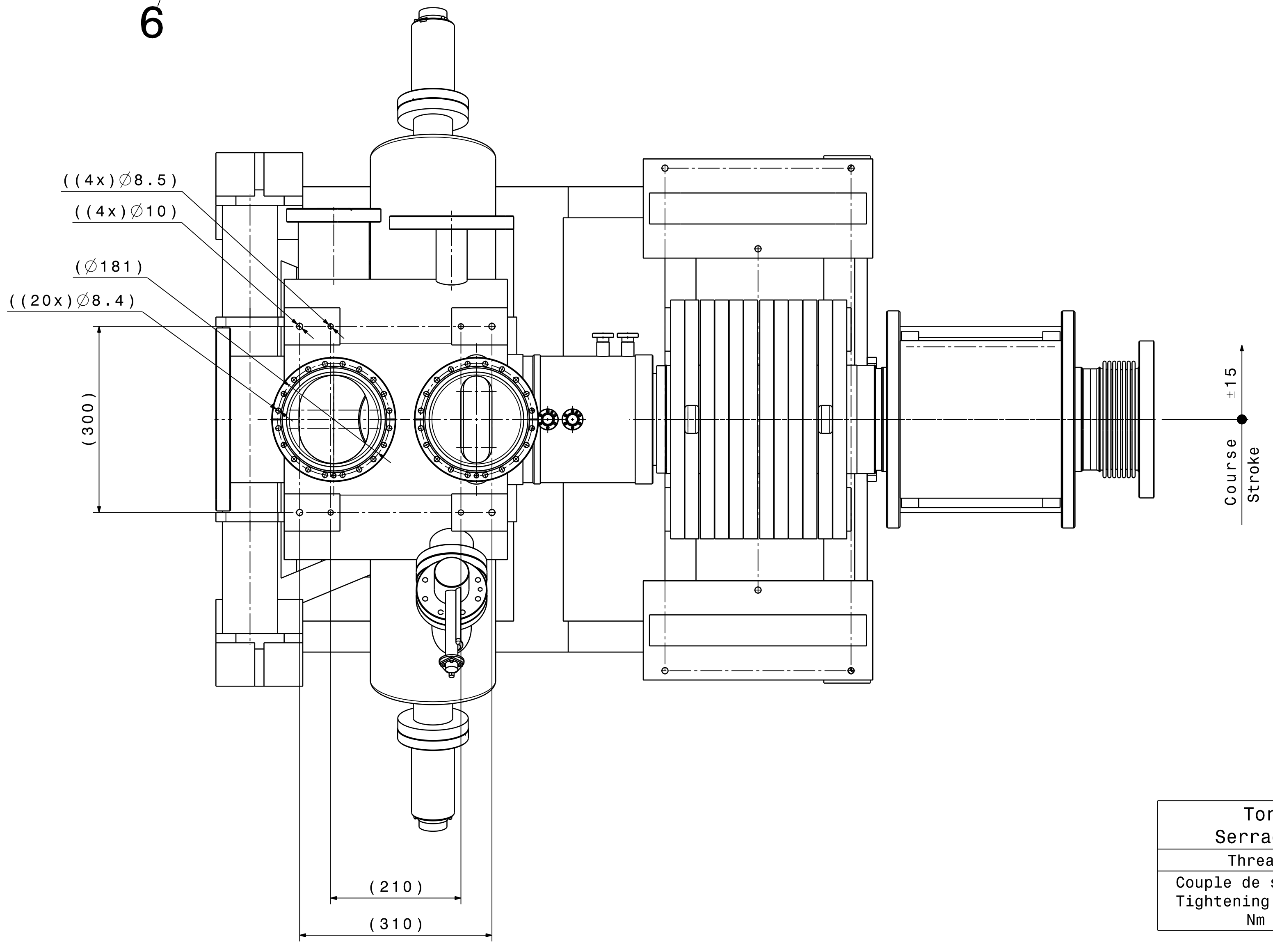
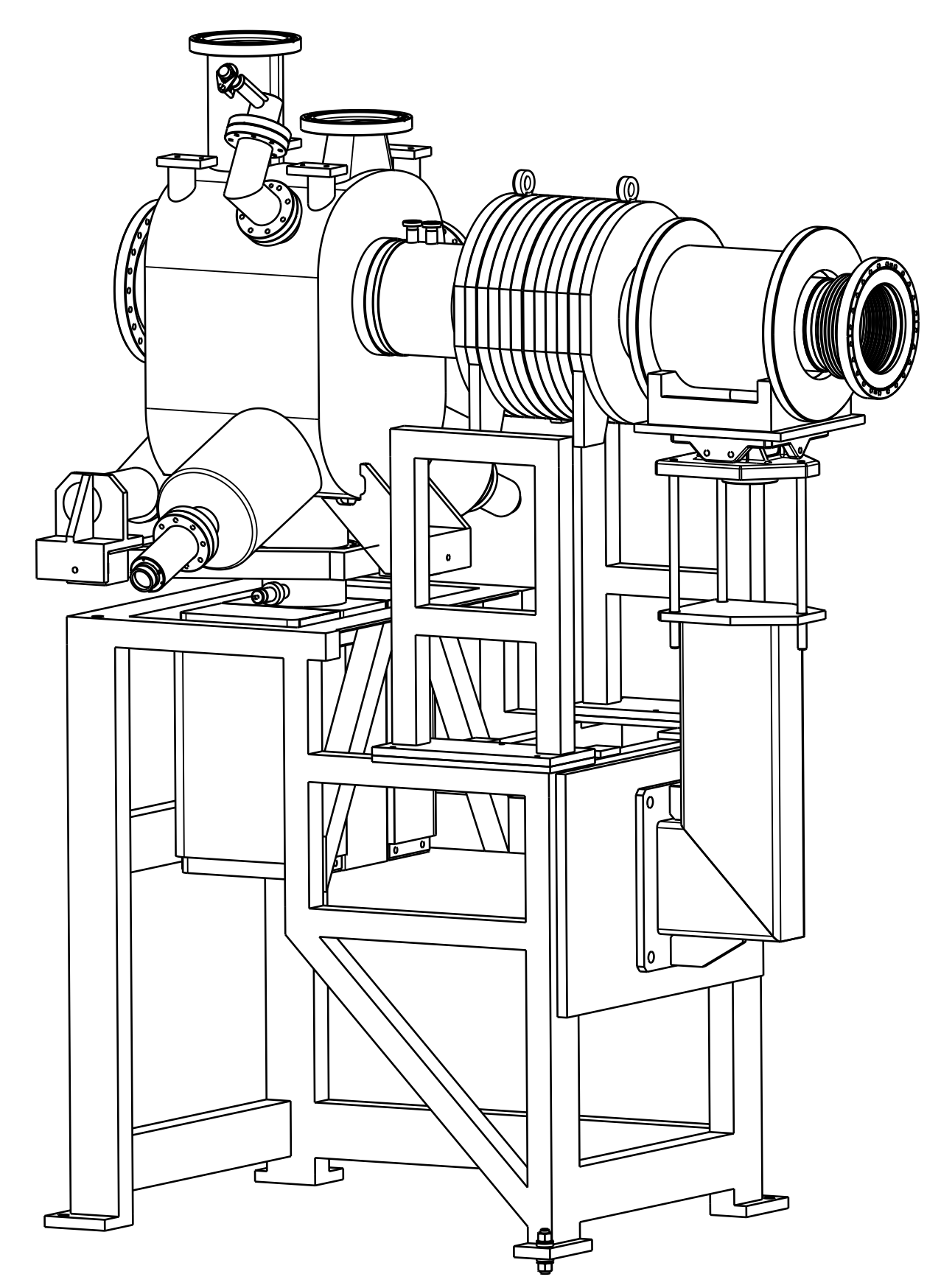
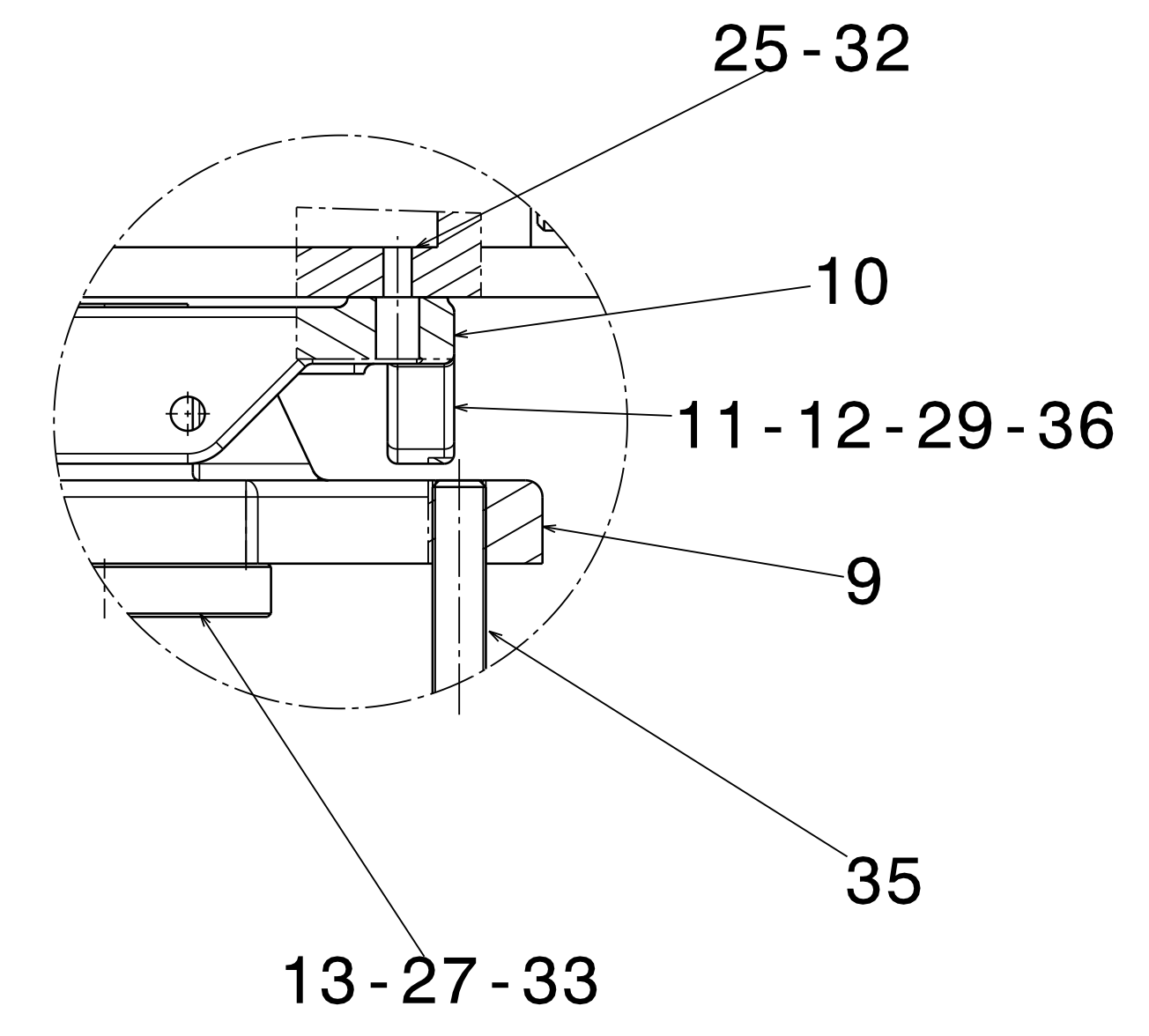


Unit LEIVCPTF0003 is welded in situ after installation of the magnets.
L'ensemble LEIVCPTF0003 est soudé in situ après installation des aimants. Voir détail LEIVCPTF0001.

1663 ±15 AXE CHAMBRE THEORIQUE
THEORIC CHAMBER AXE



Détail A
Echelle : 1:2
Scale



Nota/Note :
Cet ensemble est issue de l'assemblage E00.2036. Cependant, certains éléments ont été modifiés et/ou ne sont pas référencés.
This unit results from the E00.2036 assembly. However, some elements were modified and/or are not referred.

Torque Screw A4-70 for general mechanical assembly Serrage pour du A4-70 a sec (coeff. frottement μ=0.2)									
Thread	M3	M4	M5	M6	M8	M10	M12	M14	M16
Couple de serrage Tightening torque Nm	1.1	2.6	5.1	8.8	21.4	44	74	119	183

QTY	DESCRIPTION	POS	MAT.	S. ENS/S. ASS	OBSERVATIONS	REF. CERN
5	RECT.HARD.ST.ELAST.PIN 2x16	36	STEEL			47.74.82
1	Goup.Elast.AC.TREN.RECT. 2x16	36	ACIER			216.8
3	THREADED ROD M16	35	STEEL			47.36.77
1	TIGE FILETÉE M16	35	ACIER			160.3
14	SPHERICAL WASHER M16	34	HARD. STEEL			47.78.12
1	RONDELLE SPHERIQUE M16	34	ACIER DUR			816.6
12	PLAIN WASHER M16	33	ST. STEEL			47.78.15
1	RONDELLE PLATE M16	33	AC. INOX			016.8
4	PLAIN WASHER LLU M10	32	ST. STEEL	STANDARD INDUSTRY		
1	RONDELLE PLATE LLU M10	32	AC. INOX			
104	PLAIN WASHER M8	31	ST. STEEL A4			47.78.15
1	RONDELLE PLATE M8	31	AC. INOX A4			116.5
21	HEXAGONAL NUT M16	30	ST. STEEL			47.43.77
1	ECROU HEXAGONAL M16	30	AC. INOX			160.4
5	HEXAGONAL NUT M12	29	ST. STEEL			47.43.77
1	ECROU HEXAGONAL M12	29	AC. INOX			120.2
52	HEXAGONAL NUT M8	28	ST. STEEL A4			47.43.78
1	ECROU HEXAGONAL M8	28	AC. INOX A4			108.4
1	HEXAGONAL HEAD SCREW M16x90	27	ST. STEEL			47.62.81
1	VIS A TETE HEXAGONALE M16x90	27	AC. INOX			523.8
4	HEXAGONAL HEAD SCREW M16x80	26	ST. STEEL			47.62.82
1	VIS A TETE HEXAGONALE M16x80	26	AC. INOX			528.9
4	HEXAGONAL HEAD SCREW M16x30	25	ST. STEEL			47.62.71
1	VIS A TETE HEXAGONALE M16x30	25	AC. INOX			361.3
20	HEXAGONAL HEAD SCREW M8x60	24	ST. STEEL A4			47.62.83
1	VIS A TETE HEXAGONALE M8x60	24	AC. INOX A4			124.1
32	HEXAGONAL HEAD SCREW M8x45	23	ST. STEEL A4			47.62.83
1	VIS A TETE HEXAGONALE M8x45	23	AC. INOX A4			118.9
1	SEAL METAL FOR UHV FLANGE DN 150	21	CUOFS 0,1 AG			18.60.55
1	JOINT METAL POUR BRIDE UHV DN 150	21	CUOFS 0,1 AG			865.9
4	SEAL METAL FOR UHV FLANGE DN 63	20	CUOFS 0,1 AG			18.60.55
1	JOINT METAL POUR BRIDE UHV DN 63	20	CUOFS 0,1 AG			855.1
1	IONISATION GAUGE (VGI)	18			SVT305	
1	JAUGE DE IONISATION (VGI)	18				
1	ION PUMP (VP1400)	17			VARIAN 912.7022	
2	POMPE IONIQUE 400 l/s (VP1400)	17				
2	SUBLIMATION PUMP (VPS)	16			PS_VIUM0001	
1	POMPE DE SUBLIMATION (VPS)	16				
1	VACUUM TUBE 90°	14			CVT.FE.114.64	
1	TUBE A VIDE 90°	14				
1	SPECIAL WASHER	13	ANTICO		E76.1068	
1	RONDELLE SPECIALE	13				
5	DRIP CUP	12	ST. STEEL		ISR 244.466	
1	CUVETTE	12	AC. INOX			
5	SCREW HM12 MACHINED	11	ST. STEEL		ISR 244.373	
1	VIS HM12 USINEE	11	AC. INOX			
1	ADJUSTMENT BASE	10			ISR 244.464	
1	BASE DE REGLAGE	10				
1	BASIC SHEET	9			ISR 244.463	
1	PLAQUE DE BASE	9				
1	LINK LEFT	8			E76.1352	
1	CADRE GAUCHE	8				
1	SLIDING TABLE	7			E76.1064	
1	TABLE DE GLISSEMENT	7				
1	FRAME	6			E76.1053	
1	CHASSIS	6				
1	KICKER KEM12	5			E50.1209	
1	KICKER KEM12	5				
1	CORRECTION MAGNET	4			E18.1000	
1	DIPOLE DE CORRECTION	4				
1	PLATE SUPPORT SQUARE	3			LEIHM_0031	
1	PLAQUE SUPPORT EQUERRE	3				
1	SQUARE SUPPORT	2			LEIHM_0030	
1	SUPPORT EQUERRE	2				
1	VACUUM CHAMBER ASSEMBLY	1			LEIVCPTF0001	
1	ENSEMBLE CHAMBRE A VIDE	1				

QTY	DESCRIPTION	POS	MAT.	S. ENS/S. ASS	OBSERVATIONS	REF. CERN
1	ENSEMBLE CHAMBRE A VIDE	1			LEIVCPTF0001	