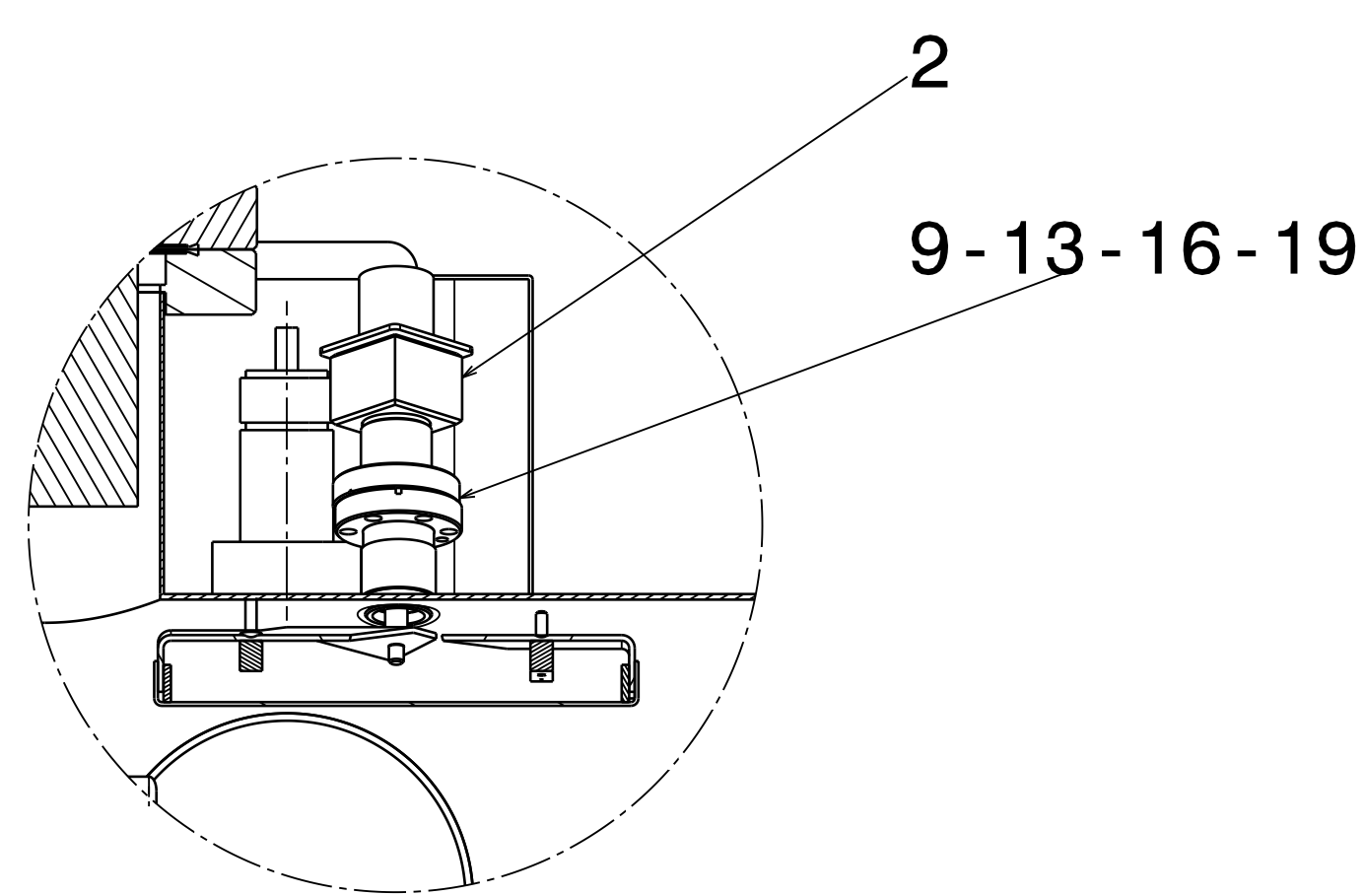
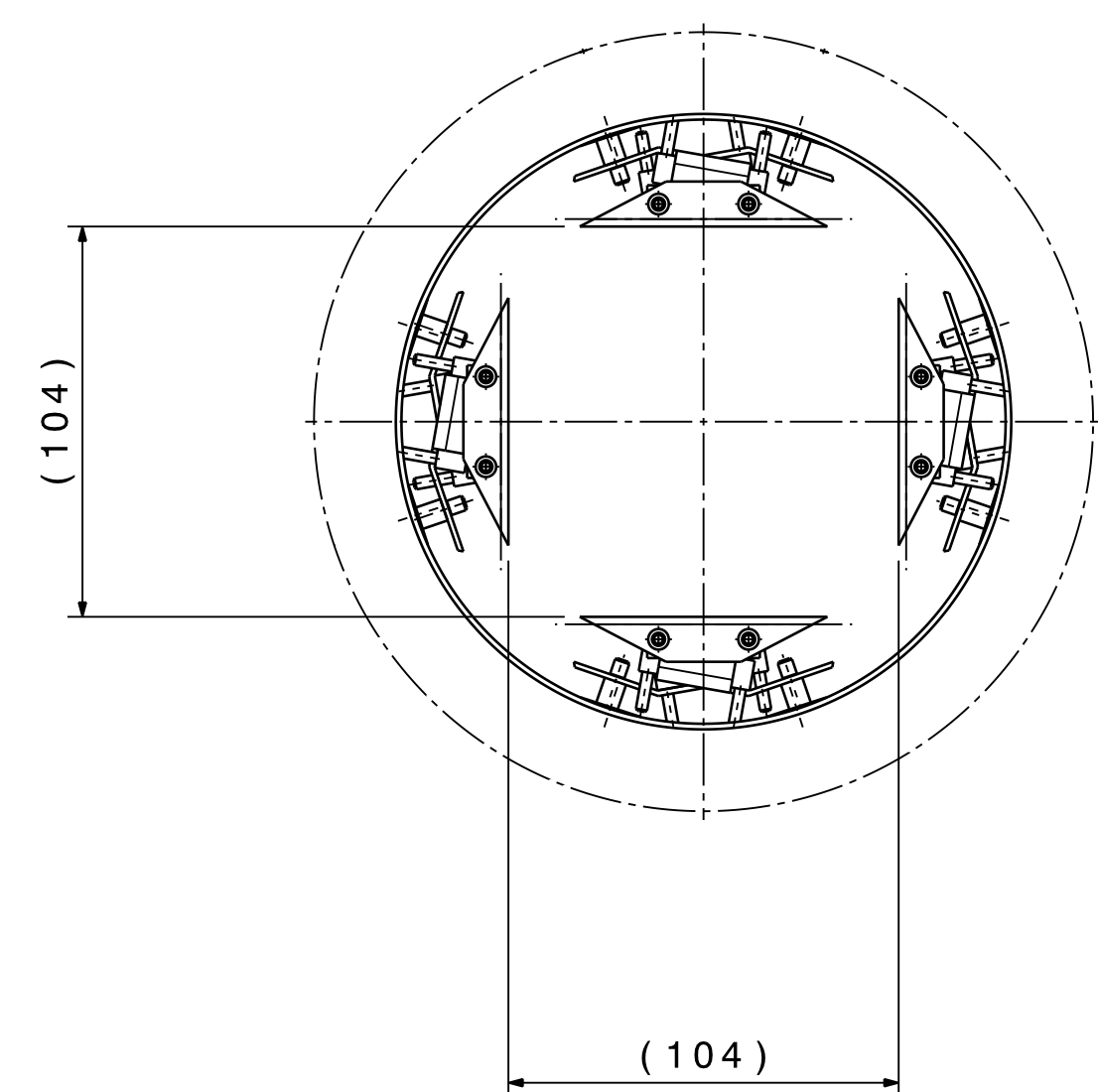


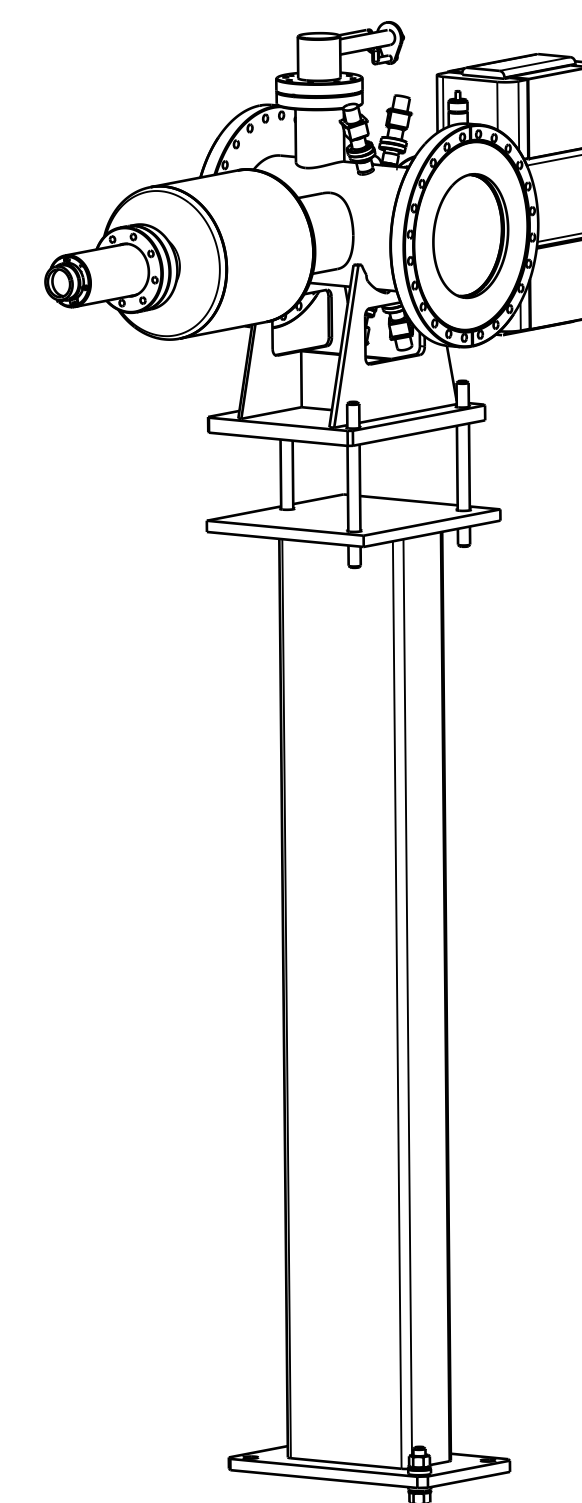
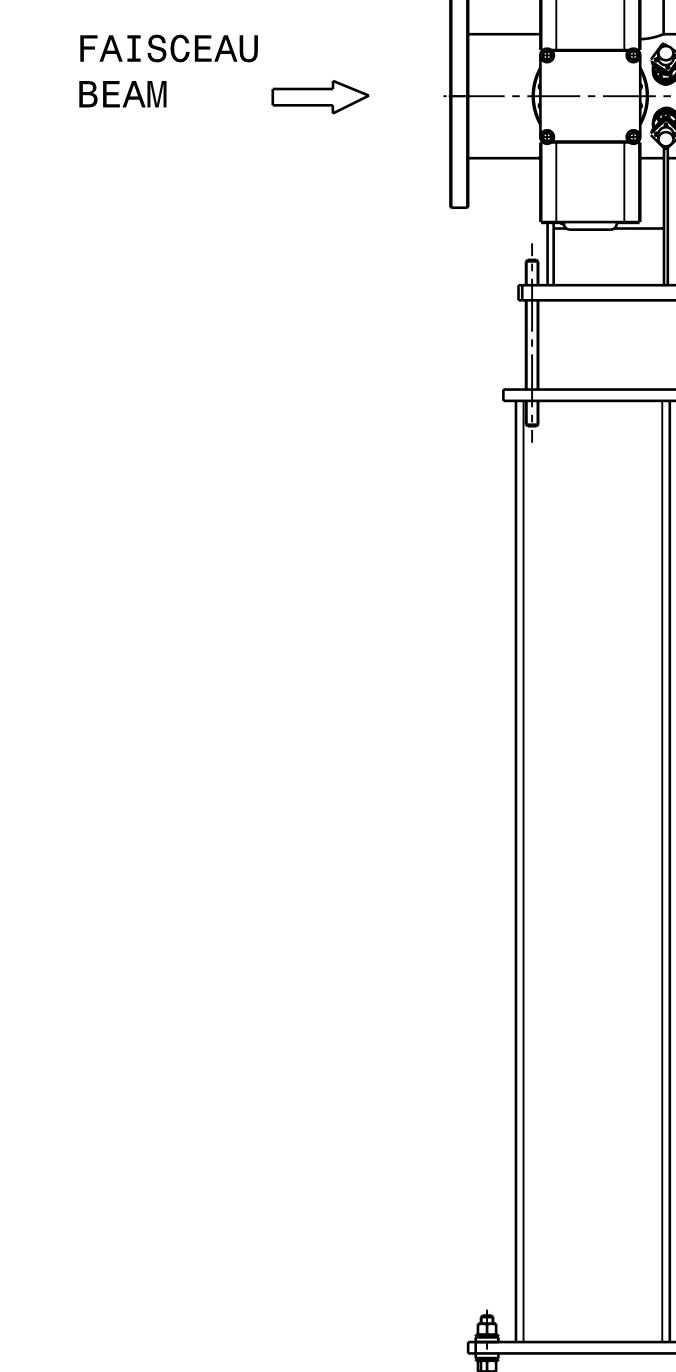
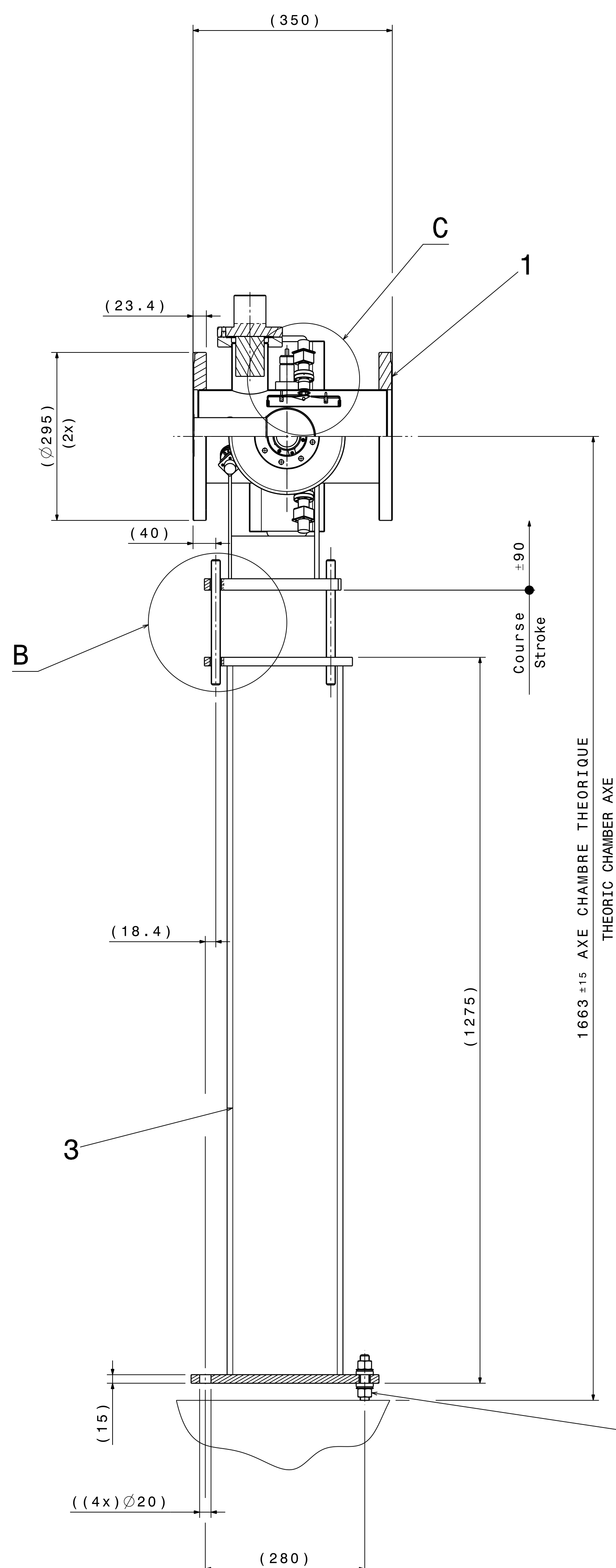
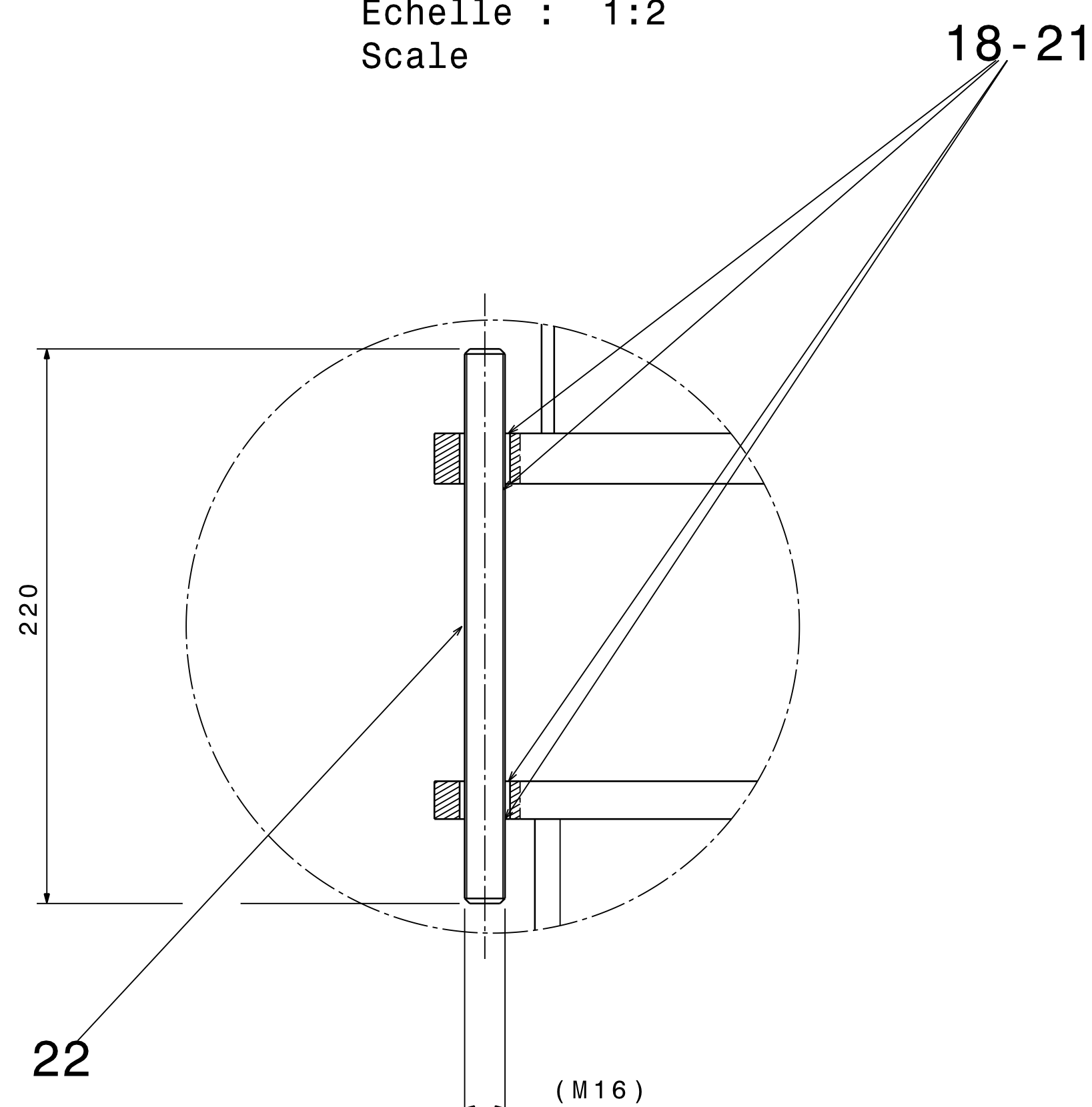
Détail C  
Echelle : 1:2  
Scale



Détail A  
Echelle : 1:2  
Scale



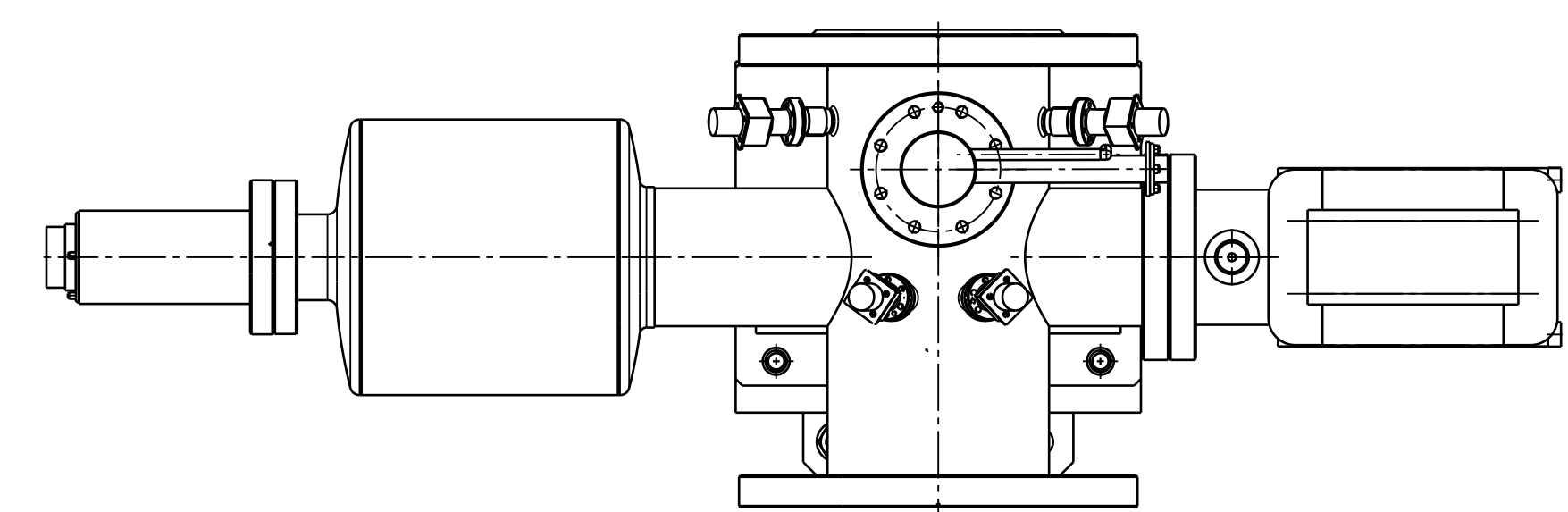
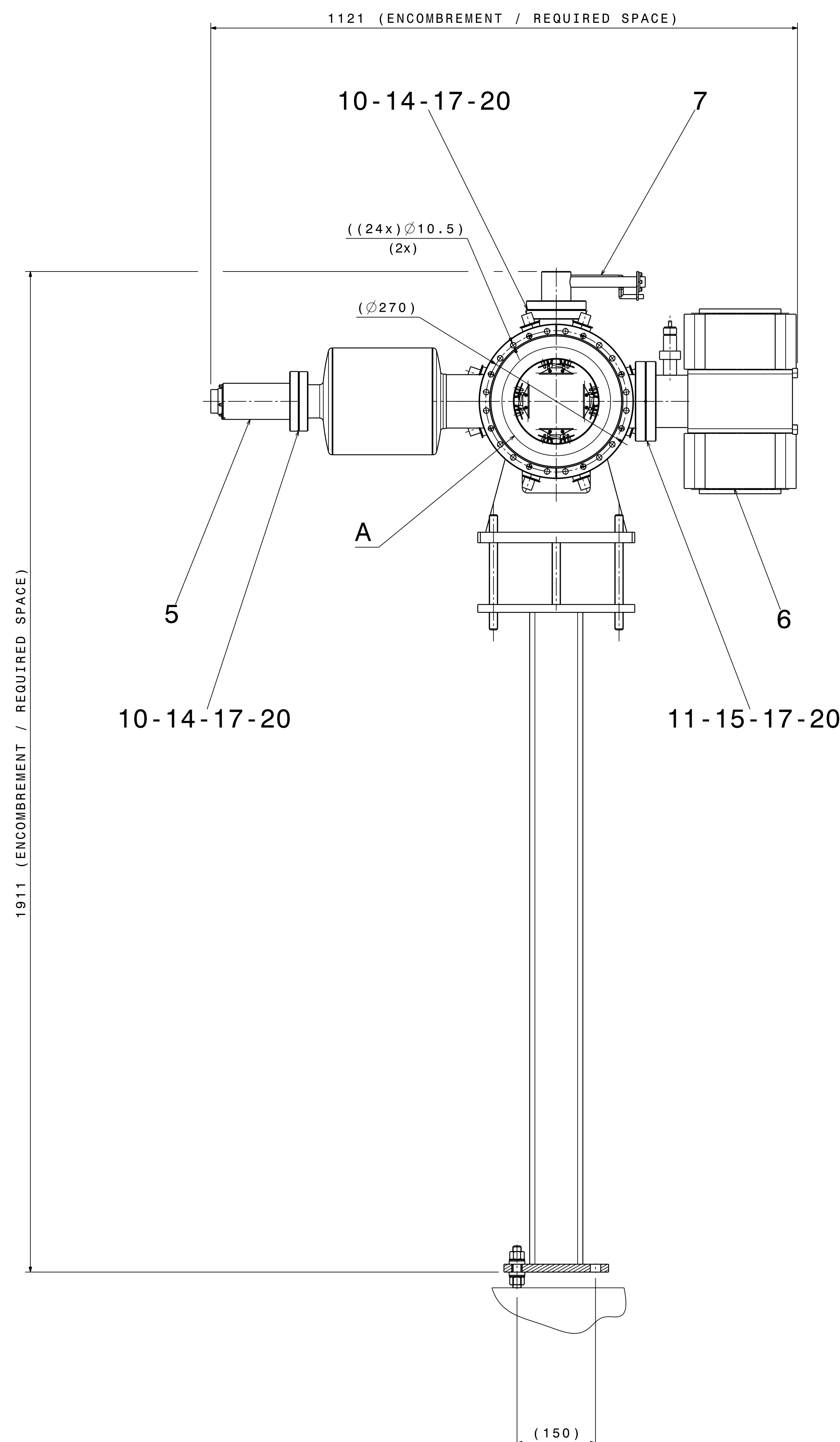
Détail B  
Echelle : 1:2  
Scale



Torque Screw A4-70 for general mechanical assembly  
Serrage pour du A4-70 a sec (coeff. frottement  $\mu=0.2$ )

Thread	M3	M4	M5	M6	M8	M10	M12	M14	M16
Couple de serrage Tightening torque Nm	1.1	2.6	5.1	8.8	21.4	44	74	119	183

3	THREADED ROD M16	22	STEEL	LENGTH 220mm	47.36.77
	TIGE FILETEE M16		ACIER	LONGUEUR 220mm	160.3
20	SPHERICAL WASHER M16	21	HARD. STEEL		47.78.12
	RONDELLE SPHERIQUE M16		ACIER DUR		816.6
64	PLAIN WASHER M8	20	ST. STEEL A4		47.78.15
	RONDELLE PLATE M8		AC. INOX A4		116.5
90	PLAIN WASHER M4	19	ST. STEEL A4		47.78.15
	RONDELLE PLATE M4		AC. INOX A4		108.5
20	HEXAGONAL NUT M16	18	ST. STEEL		47.43.77
	ECROU HEXAGONAL M16		AC. INOX		160.4
32	HEXAGON NUT M8	17	ST. STEEL A4		47.43.78
	ECROU HEXAGONAL M8		AC. INOX A4		108.4
48	HEXAGONAL NUTS M4	16	ST. STEEL A4		47.43.78
	ECROU HEXAGONAL M4		AC. INOX A4		104.8
16	HEXAGONAL HEAD SCREW M8x45	15	ST. STEEL A4		47.62.83
	VIS A TETE HEXAGONALE M8x45		AC. INOX A4		122.3
16	HEXAGONAL HEAD SCREW M8x45	14	ST. STEEL A4		47.62.83
	VIS A TETE HEXAGONALE M8x45		AC. INOX A4		118.9
48	HEXAGONAL HEAD SCREW M4x20	13	ST. STEEL A4		47.62.83
	VIS A TETE HEXAGONALE M4x20		AC. INOX A4		004.8
		12			
1	SEAL METAL FOR UHV FLANGE DN 100	11	CUOFS 0,1 AG		18.60.55
	JOINT METAL POUR BRIDE UHV DN100		CUOFS 0,1 AG		860.4
2	SEAL METAL FOR UHV FLANGE DN 63	10	CUOFS 0,1 AG		18.60.55
	JOINT METAL POUR BRIDE UHV DN 63		CUOFS 0,1 AG		855.1
8	SEAL METAL FOR UHV FLANGE DN 16	9	CUOFS 0,1 AG		18.60.55
	JOINT METAL POUR BRIDE UHV DN 16		CUOFS 0,1 AG		840.8
		8			
		7			
1	IONISATION GAUGE (VGI)	7		SVT 305	
	JAUZE DE IONISATION (VGI)				
1	ION PUMP (VPI60)	6		VARIAN 811.5034	
	POMPE IONIQUE 60 L/s (VPI60)				
1	SUBLIMATION PUMP (VPS)	5		PS_VMPUM0001	
	POMPE DE SUBLIMATION (VPS)				
		4			
1	PILLAR VACUUM CHAMBER	3		E76.1050	
	PILIER CHAMBRE A VIDE				
4	ELECTRODE EQUIPPED	2		LEI1PUIA0001	
	ELECTRODE EQUIPEE				
1	PUMP TANK WITH PICK UP	1		LEI1VCKSC0001	
	CHAMBRE A VIDE AVEC PIQUAGES				
QUANT	DESCRIPTION	POS	MAT.	OBSERVATIONS	REF. CERN
	ENS/ASS		S. ENS/S.S. ASS		
Assembly of Kicker magnet - for stamping or 5 measurement				EGHELLE	DES. DRG. ACROTECHA 2006-08-03
KICKER ASSEMBLY				SCALE	
KICKER				1:5	CONTROLLED
ENSEMBLE				1:2	RELEASED
					APPROVED
					LEI1LMKDQ001
					REPLACE/REPLACES
					LEI1LMKDQ004
NON VALABLE POUR EXECUTION				001	LEI1LMKDQ004
NOT VALID FOR EXECUTION					0



DESIGN, MANUFACTURE, TEST SERVICES  
 DRAWING, QUALITY, STANDARDS  
 ASSURANCE TO ISO STANDARDS  
 THE DESIGN AND MANUFACTURE OF THIS PRODUCT IS THE PROPERTY OF ACROTECHA. IT IS NOT TO BE REPRODUCED OR TRANSMITTED IN ANY FORM OR BY ANY MEANS, ELECTRONIC OR MECHANICAL, WITHOUT THE WRITTEN PERMISSION OF ACROTECHA.