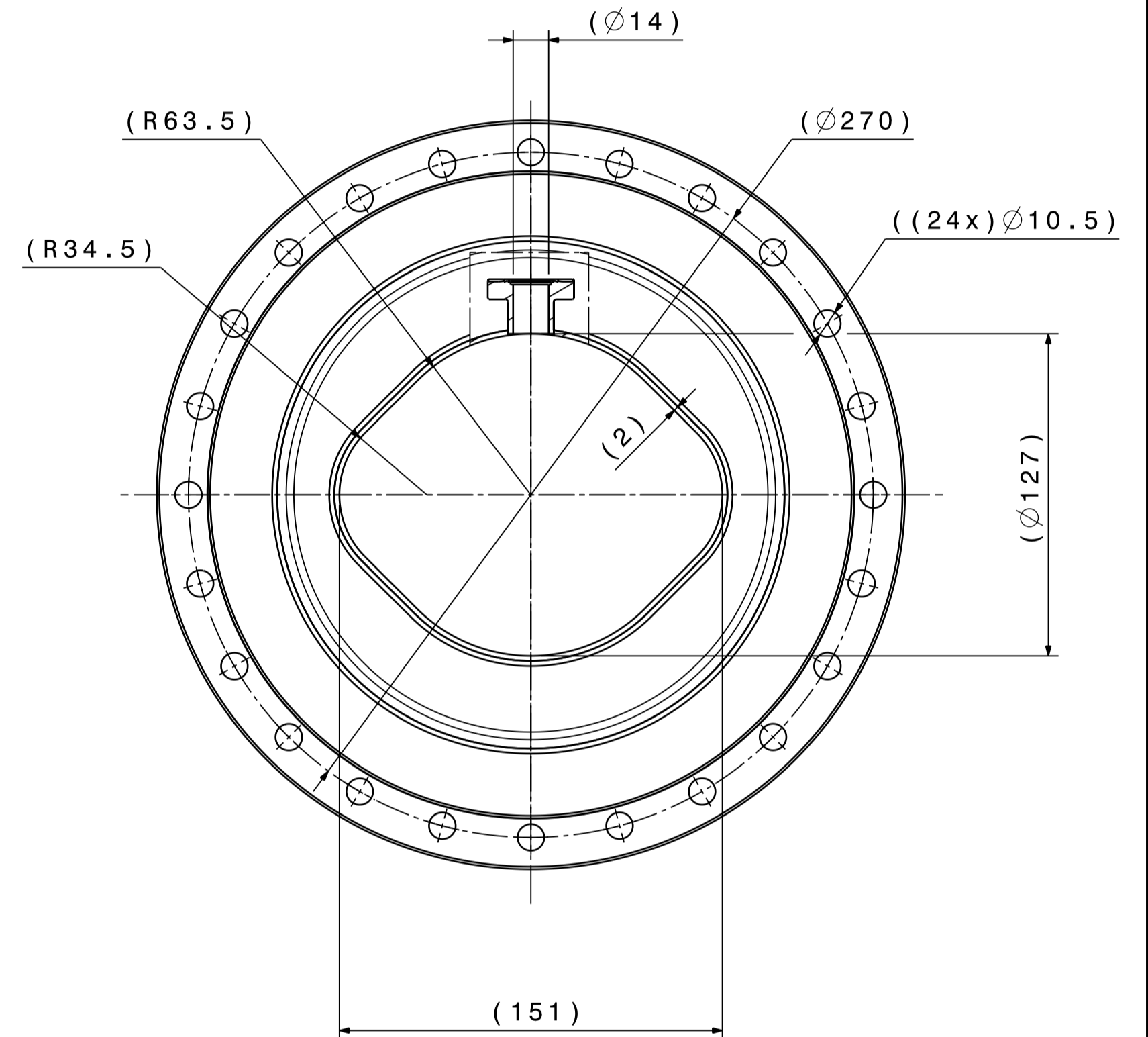
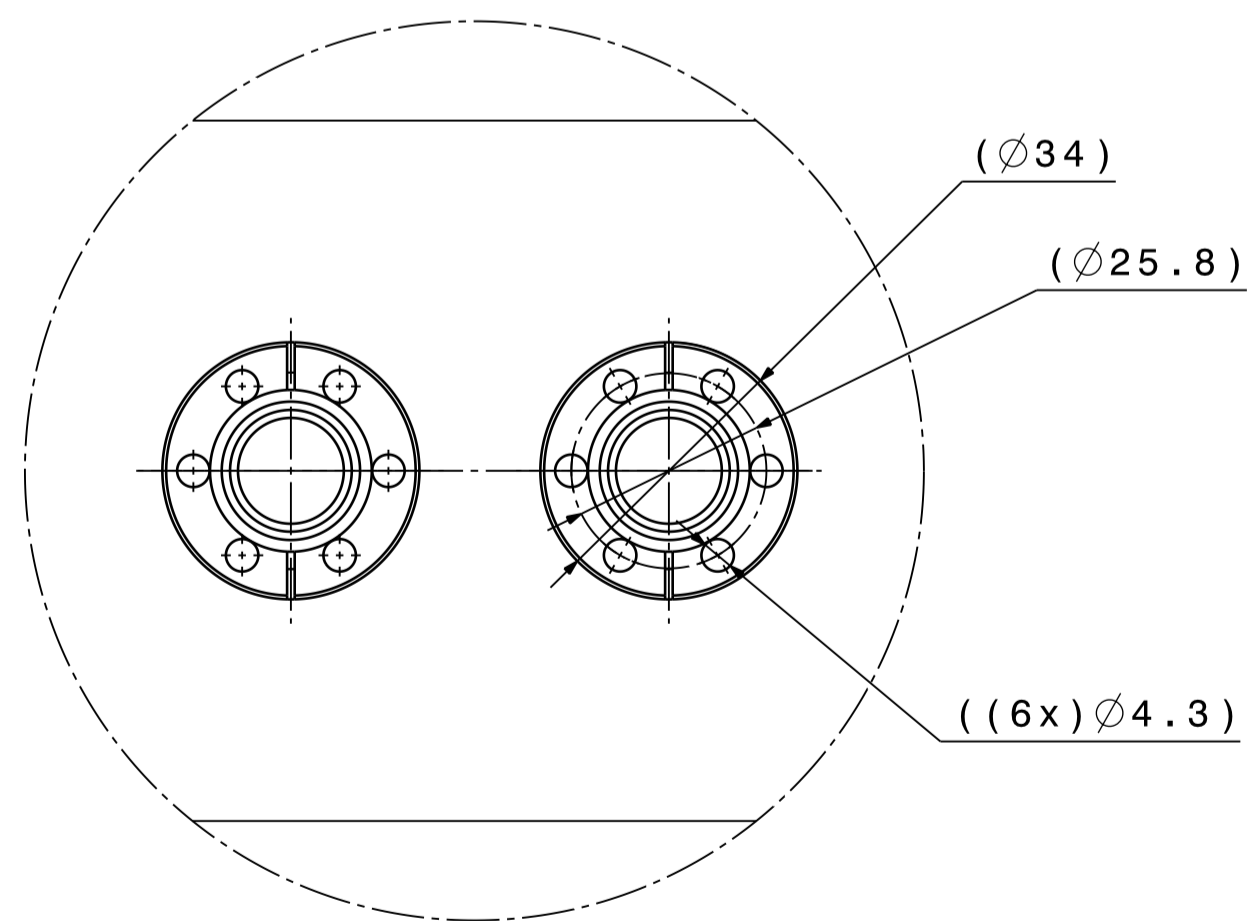


Approximative mass : 30 kg
Masse approximative



Vue A
View
Echelle : 1:1
Scale



To weld during assembling after mounting vacuum chamber into quadrupoles and sextupole. See drawing LEILMQFB0005.

A souder au montage apres introduction de la chambre dans les quadrupoles et le sextupole. Voir plan LEILMQFB0005.

Cleaning / Nettoyage

According procedure / Suivant procedures de L. Ferreira, CERN Reports : Procedure Qualite 867.11, 867.15, 876.16 (2003)

Vacuum firing / Traitement Thermique

600°C for 24H / 600°C pendant 24H

NEG coating / Depot NEG

Coating with 2 μm Ti-Zr-V / Dépôt de 2 μm de Ti-Zr-V

Information

Inscribe drawing number on shades area with an electrical pen
Inscrire le numero de detail sur une zone predefini avec un stylo electrique

Tolerances geometriques, lineaires et angulaires	ISO 2768-mK-E
Arêtes de forme non definies	ISO 13715 ± 0.3 ± 0.3

This drawing represents a part (or a component) of the vacuum system for LEIR with will operate at 10-10 Pa (10-12Torr).All welds must be made using the specified technics with 100% penetration.Welds and all other surfaces must not be finished by grinding or any other mechanical abrasion.Any part (or component) of the vacuum system showing a room temperature leak rate (localized or global),when measured with a calibrated UHV leak detector, in excess of 1x10⁻¹¹ Pa m³ s⁻¹ (7.5x10⁻¹¹ Torr ls-1) will be considered as unacceptable.

Ce dessin represente une partie (ou composant) du systeme a vide LEIR qui fonctionnera a 10-10 Pa (10-12 Torr). Toutes les soudures seront realisees selon le procede specifique avec penetration de 100%.Ces soudures ne doivent etre ni meulees ni abrasees. Toute partie (ou composant) du systeme a vide ayant un taux de fuite (local ou global), qui est mesure a l'aide d'un detecteur de fuite UHV, superieur a 1x10⁻¹¹ Pa m³ s⁻¹ (7.5x10⁻¹¹ Torr ls-1) sera considere comme inacceptable.

2	BELLOWS / FLANGE ASS. ENS. SOUFFLET / BRIDE	2	ST. STEEL AC. INOX	E43.1045	
1	VACUUM CHAMBER WITH PICK UP CHAMBRE A VIDE AVEC PIQUAGES	1	ST. STEEL 316LN	LEIVCQLF0002	
QUANT.	DESCRIPTION	POS.	MAT.	OBSERVATIONS	REF. CERN
ENS/ASS	S.ENS/S.ASS		LEILMQFB0005		
LEIR Vacuum Chamber for Quadrupoles Lorange-shaped (Variant F)				ECHELLE SCALE	DES/DRA. ACROTECNA 2006-07-18
QUADRUPOLES STACK VACUUM CHAMBER ASSEMBLY STACK DE QUADRUPOLES ENSEMBLE CHAMBRE A VIDE				CONTROLLED	
				RELEASED	
				APPROVED	
				LEIVCQLF01/LEIVCQLF0001	
				REPLACE/REPLACES	
NON VALABLE POUR EXECUTION NOT VALID FOR EXECUTION				QAC -	SIZE IND. LEIVCQLF0001 1

ORGANIZATION RESPONSIBLE FOR DESIGN, RASORTE, TOLERANCES DRAWING, RUGOSITY, TOLERANCES ACCORDING TO ISO STANDARDS PROJECTION

ORGANIZATION RESPONSIBLE FOR DESIGN, RASORTE, TOLERANCES DRAWING, RUGOSITY, TOLERANCES ACCORDING TO ISO STANDARDS PROJECTION