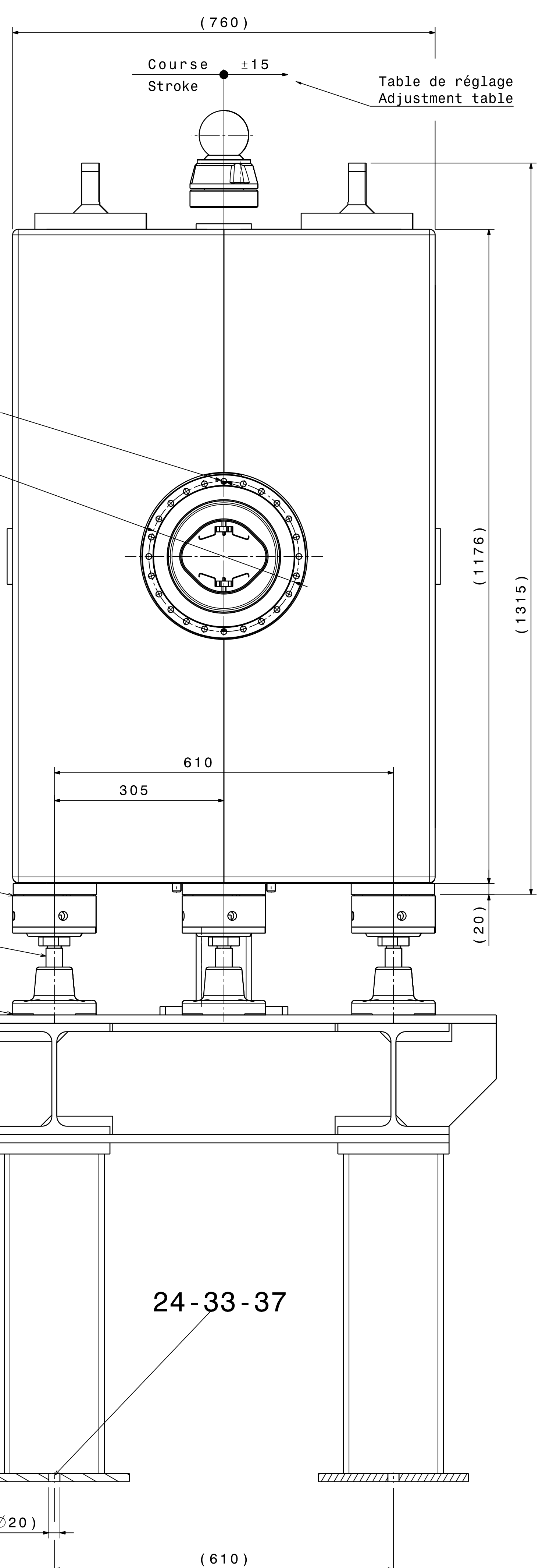


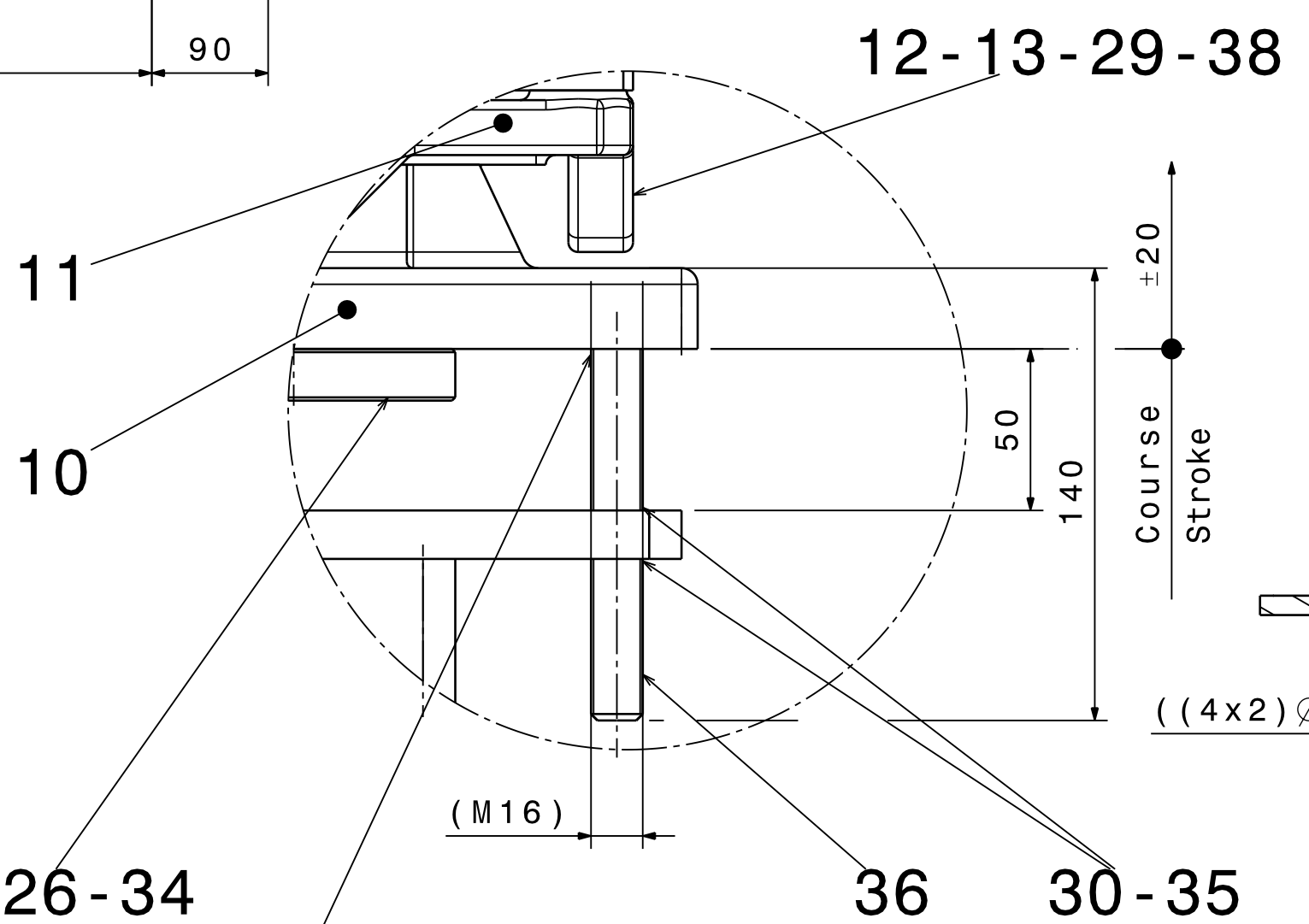
40

Supportage de mire non documenté  
Self-supporting of target not documented

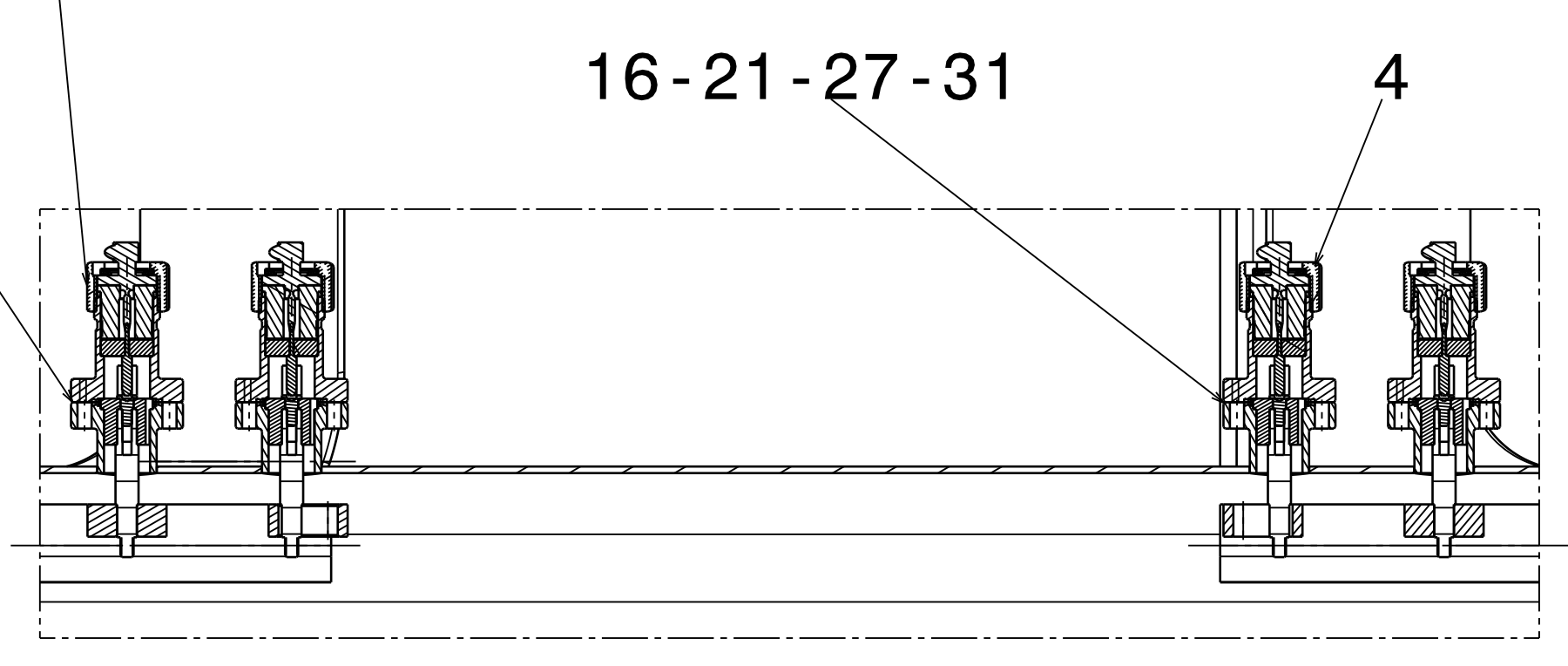
A souder au montage apres introduction  
de la chambre a vide dans les quadrupoles  
et le dipole.  
Voir plan LEIVCOLF0001 pour les  
specifications soudures.  
To weld during assembling after mounting  
vacuum chamber into quadrupoles and dipole.  
See drawing LEIVCOLF0001 for the  
weldings specification.



Détail B  
Echelle : 1:2  
Scale

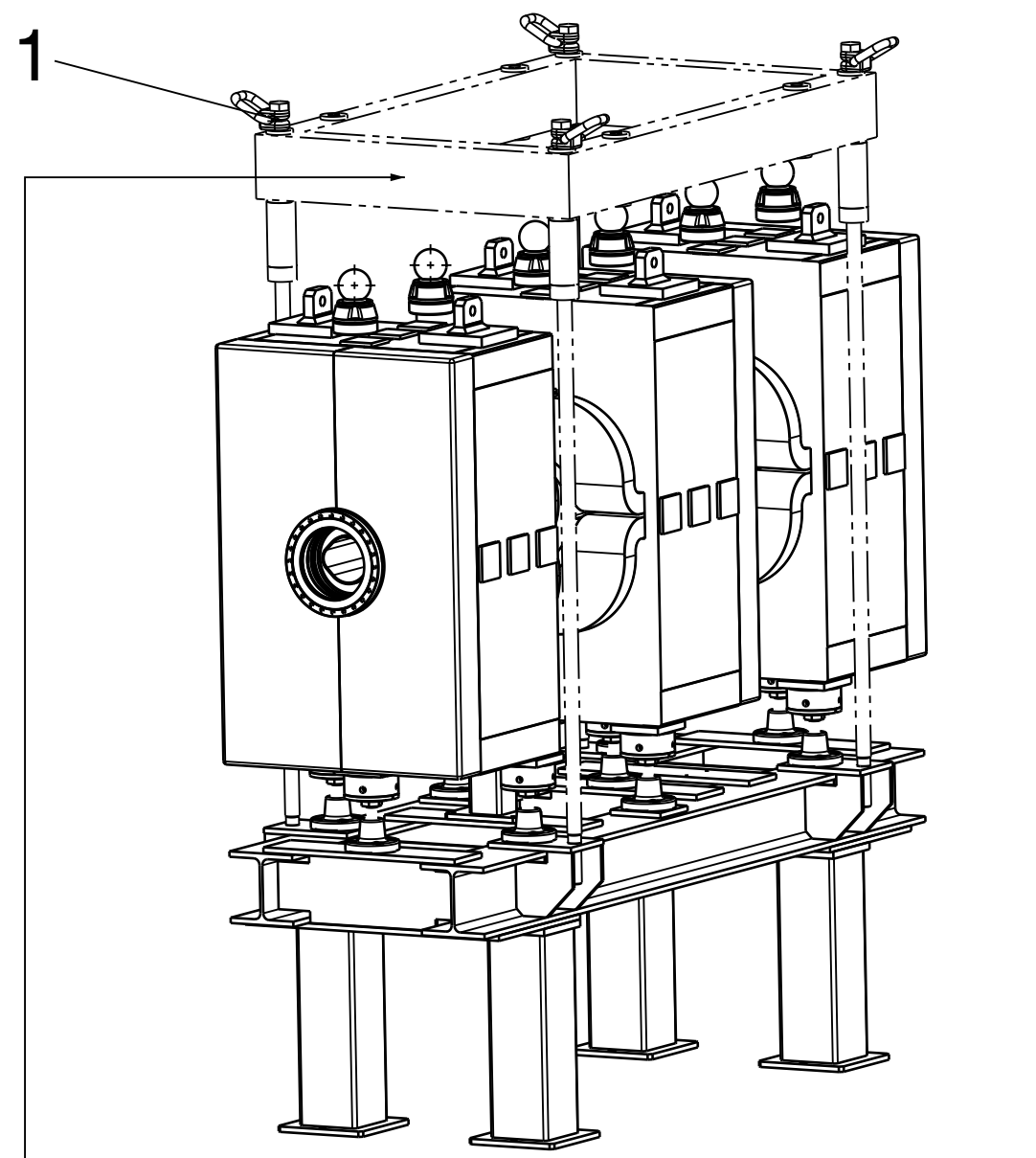


Détail A  
Echelle : 1:2  
Scale

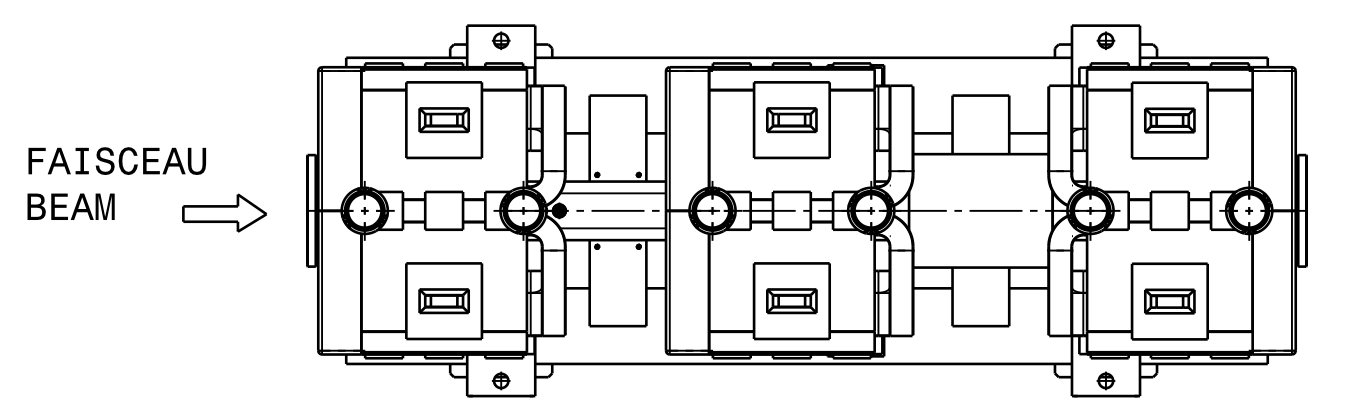


Torque Screw A4-70 for general mechanical assembly  
Serrage pour du A4-70 a sec (coeff. frottement  $\mu=0.2$ )

Thread	M3	M4	M5	M6	M8	M10	M12	M14	M16
Couple de serrage Tightening torque Nm	1.1	2.6	5.1	8.8	21.4	44	74	119	183



Equipement palan à démonter apres  
la mise en place du stack de quadrupoles  
Hoist equipment to dismantle after the  
installation of the quadrupoles stack



QTY	DESCRIPTION	POS	MAT.	OBSERVATIONS	REF. CERN
6	TARGET MIRE	40		LHGTMSA0002	
5	RECT. HARD. ST. ELAST. PIN 2x16	38	STEEL		47.74.92
8	METALLIC PLUG	37	STEEL		47.86.27
3	THREADED ROD M16	36	STEEL	RATE 140mm	47.36.77
6	SPHERICAL WASHER M16	35	HARD. STEEL	HARD. DEBIT 140mm	47.78.12
4	PLAIN WASHER M16	34	AC. INOX		47.78.15
8	PLAIN WASHER LARGE M12	33	STEEL	STANDARD INDUSTRY	47.78.15
44	PLAIN WASHER M12	32	ST. STEEL		012.2
193	RONDELLE PLATE M4	31	AC. INOX A4		47.78.15
9	HEXAGONAL NUT M16	30	AC. INOX		108.5
5	ECROU HEXAGONAL M12	29	AC. INOX		47.43.77
4	HEXAGONAL NUT M8	28	AC. INOX		120.2
5	ECROU HEXAGONAL M8	27	AC. INOX		47.43.77
96	HEXAGONAL NUTS M4	26	ST. STEEL A4		080.3
1	HEXAGONAL HEAD SCREW M16x90	25	AC. INOX A4		47.43.78
1	VIS A TETE HEXAGONALE M16x90	24	AC. INOX		104.8
8	HEXAGONAL HEAD SCREW M12x60	23	STEEL		47.62.82
36	VIS A TETE HEXAGONALE M12x45	22	AC. INOX		540.3
4	HEXAGONAL HEAD SCREW M12x30	21	ST. STEEL		47.62.81
96	VIS A TETE HEXAGONALE M4x20	20	AC. INOX A4		415.1
4	HC SCREW M8x40	19	STEEL	BOSSARD BN617	47.62.82
4	VIS HC M8x40	18	ACIER		411.1
4	SOCKET HEAD SCREW M12x35	17	ST. STEEL		47.62.82
4	VIS CHC M12x35	16	AC. INOX		411.1
36	SOCKET HEAD SCREW M10x70	15	ST. STEEL		47.62.81
4	VIS CHC M10x70	14	AC. INOX		412.9
16	SEAL METAL FOR UHV FLANGE DN 16	13	CU95S 0,1 AG		47.62.71
16	JOINT METAL. POUR BRIDE UHV DN 16	12	CU95S 0,1 AG		840.8
1	SPECIAL WASHER RONDELLE SPECIALE	11	ANTICO	E76.1068.4	
5	DRIP CUP CUVETTE	10	ST. STEEL	ISR 244.466.4	
5	SCREW HM12 MACHINED VIS HM12 USINEE	9	AC. INOX	ISR 244.373.4	
1	ADJUSTMENT BASE PLAQUE DE BASE	8	AC. INOX	ISR 244.464.1C	
1	BASIC SHEET PLAQUE DE BASE	7		ISR 244.463.1	
1	FOOT FOR CRADLE PIED POUR BERCEAU	6		E76.1027	
1	CRADLE BERCEAU	5		E76.1026	
9	JACK ST VISRIE ST	4		E76.1006	
1	SEXTUPOLE SEXTUPOLE	3		E20.1004	
3	QUADRUPOLE QUADRUPOLE	2		E12.1010	
2	ELECTRODE EQUIPPEE	1		LEIBPUIAF0001	
2	ELECTRODE EQUIPPEE	1		LEIBPUIAD0001	
1	VACUUM CHAMBER CHAMBRE A VIDE	1		LEIVCOLF0001	
1	FRAME / HOIST CHASSIS / PALAN	1		LEIHMQFB0001	

Assembly of Quadrupoles Focusing in both planes  
Echelle: 1:2  
LAYOUT  
LAYOUT  
STACK OF QUADRUPOLES  
STACK DE QUADRUPOLES

REVISIONS

NO	DATE	DESCRIPTION
1	2006-07-17	ACROTECHNA

LEILMQFB0005