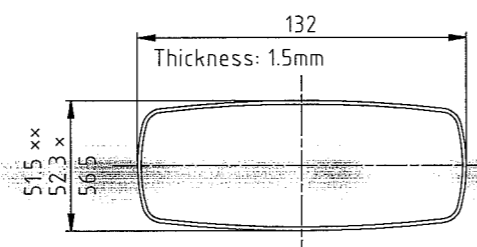
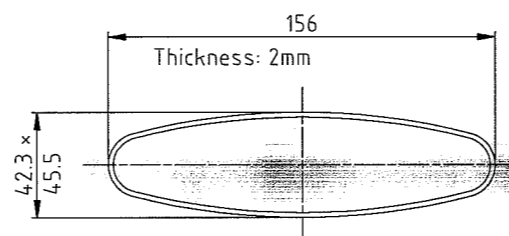


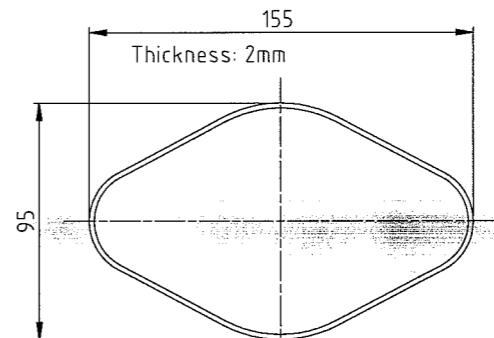
For MBA magnet
SPS 8095-0040 ✓



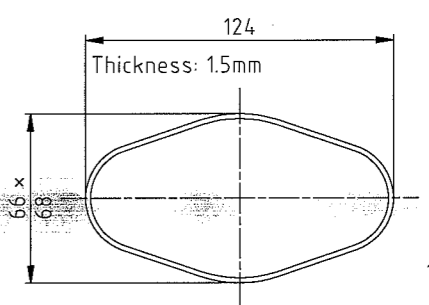
For MBB magnet
SPS 8095-0042 ✓



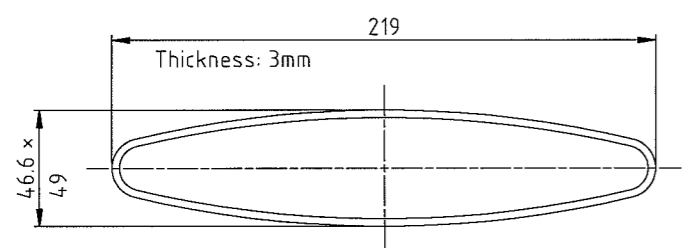
For QF magnet
SPS 8095-0043 ✓



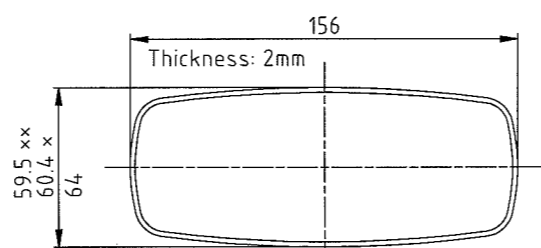
For QFA-QDA magnet ✗
SPS 8095-0386



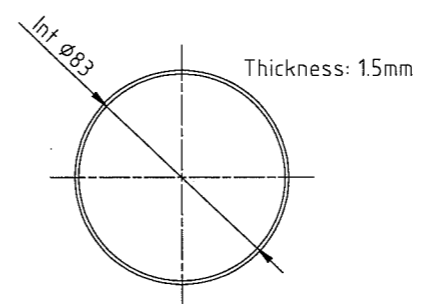
TT60
SPS 8097-0006



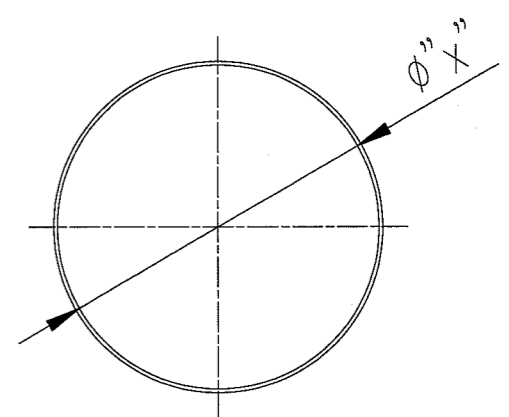
For QFA-QDA magnet ✗
SPS 8095-0388



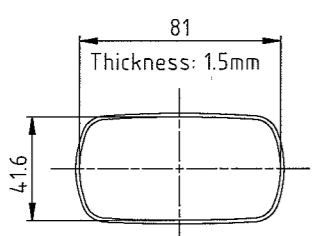
For MBN magnet
SPS 8088-2204



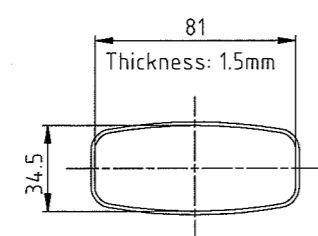
For QD magnet ✓
SPS 8095-0044



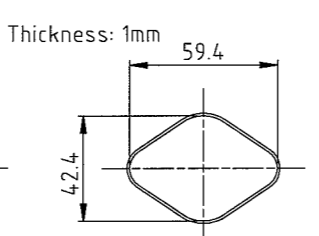
- Ø 130/133 - SPS 8095-4032
- Ø 142/145 - SPS 8097-0135
- Ø 156/159 - SPS 8096-0010 ✓
- Ø 215/219 - SPS 8097-0134
- Ø 268/273 - SPS 8095-4031 ✓



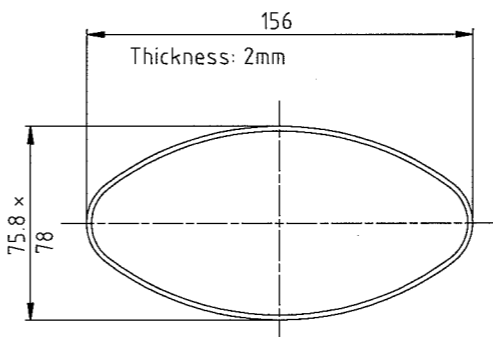
For MDG magnet
TT41
SPS VCEG 0009



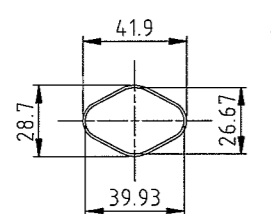
For MBG magnet
TT41
SPS VCEG 0002



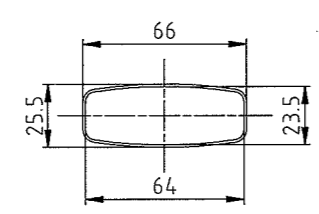
For QTG magnet
TT41
SPS VCEG 0006



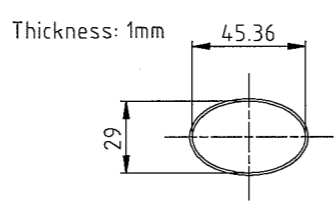
TT10
SPS 8096-0047



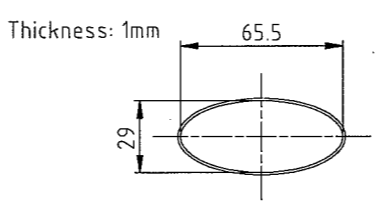
For MQI magnet
T12 & Y18
LHC VCEIQ 0002



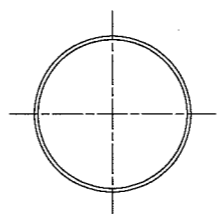
For MBI bending magnet
T12 & T18
LHC VCEIB 0002



T12 & T18
LHC VCEI 0007



T12 & T18
LHC VCEI 0009



For T12 & T18
Ø 29/31 - LHC VCRIC 0002
Ø 49/51 - LHC VCRIA 0002
Ø 60/63 - LHC VCRIS 0002

✗ Dimension under vacuum
✕✕ Dimension when compressed in magnet

SPS VACUUM CHAMBERS
 DRAWING NUMBER: 1000000000
 PROJECT: LHC
 DATE: 2008-08-02
 SCALE: 1:1
 SHEET: 11
 CONTROLLED BY: J. BIELLIN
 RELEASED BY: K. MESS
 APPROVED BY: SPS VCEB01VCPEB108
 REPLACES: SPS VCEB01VCPEB108

A	NO.	DATE	REP/NAME	ZONE	MODIFICATION

SPS VACUUM CHAMBERS		SCALE	DES/DRW	C. MESS	2008-08-02
SPS - TT - T1		1:1	J. BIELLIN	K. MESS	2008-11-03
MAIN LINE OF VACUUM CHAMBER					2007-09-10
SPS - TT - T1					
LIGNE PRINCIPAL DES CHAMBRES A VIDE					
RELEASED BY	FOR	INFO	SPSVCEB0108		
PROJECT ENGINEER	INFORMATION		0 A		