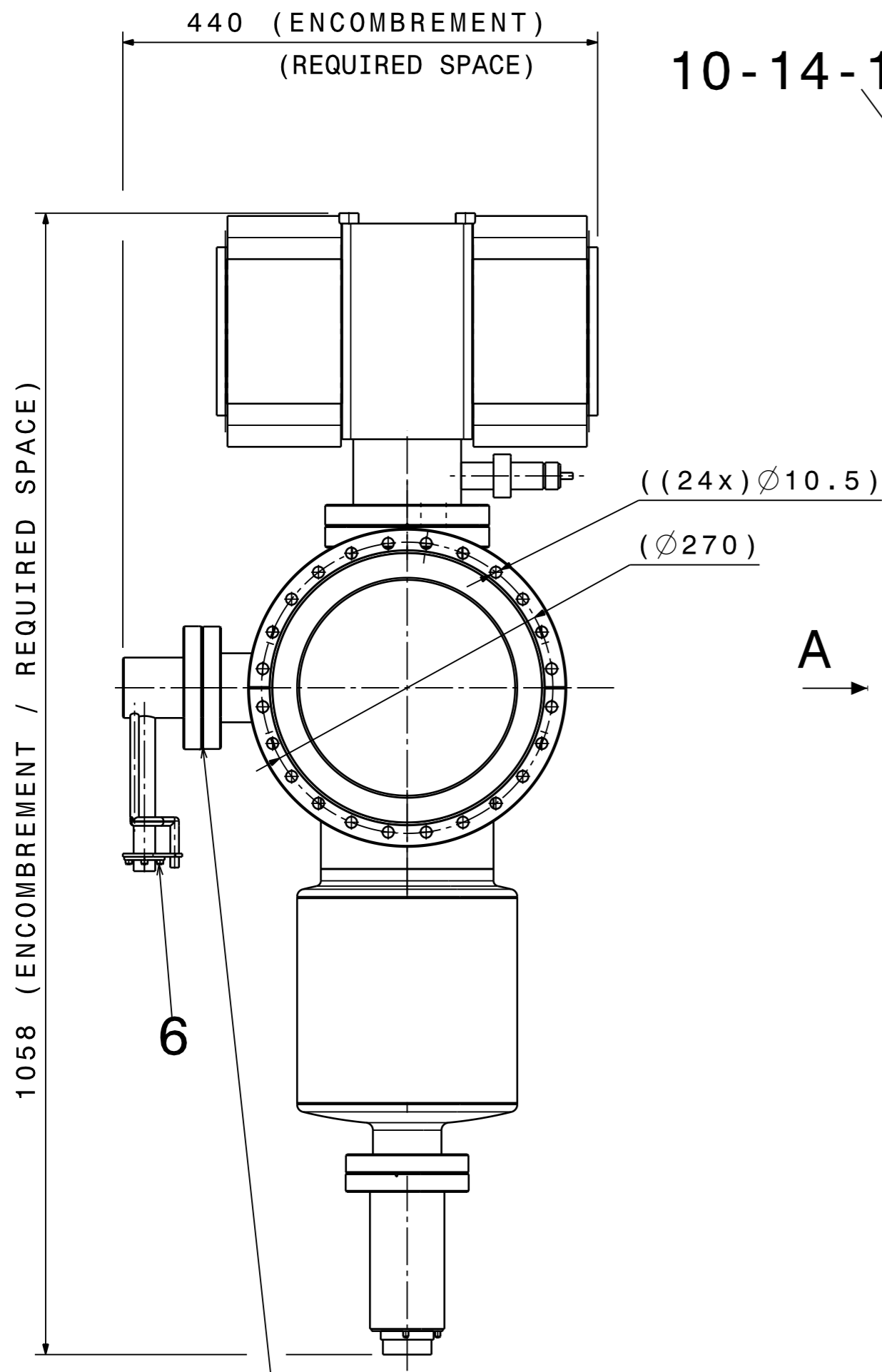


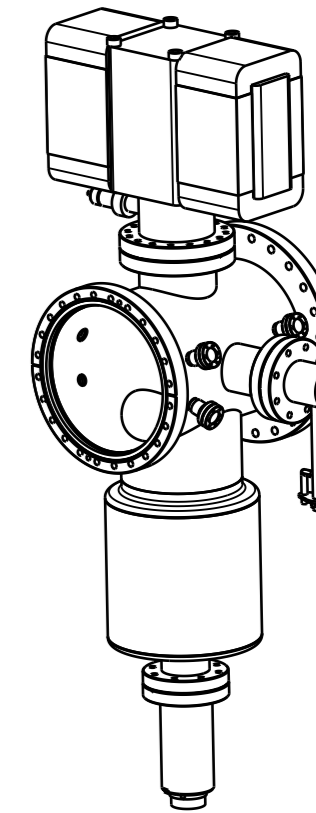
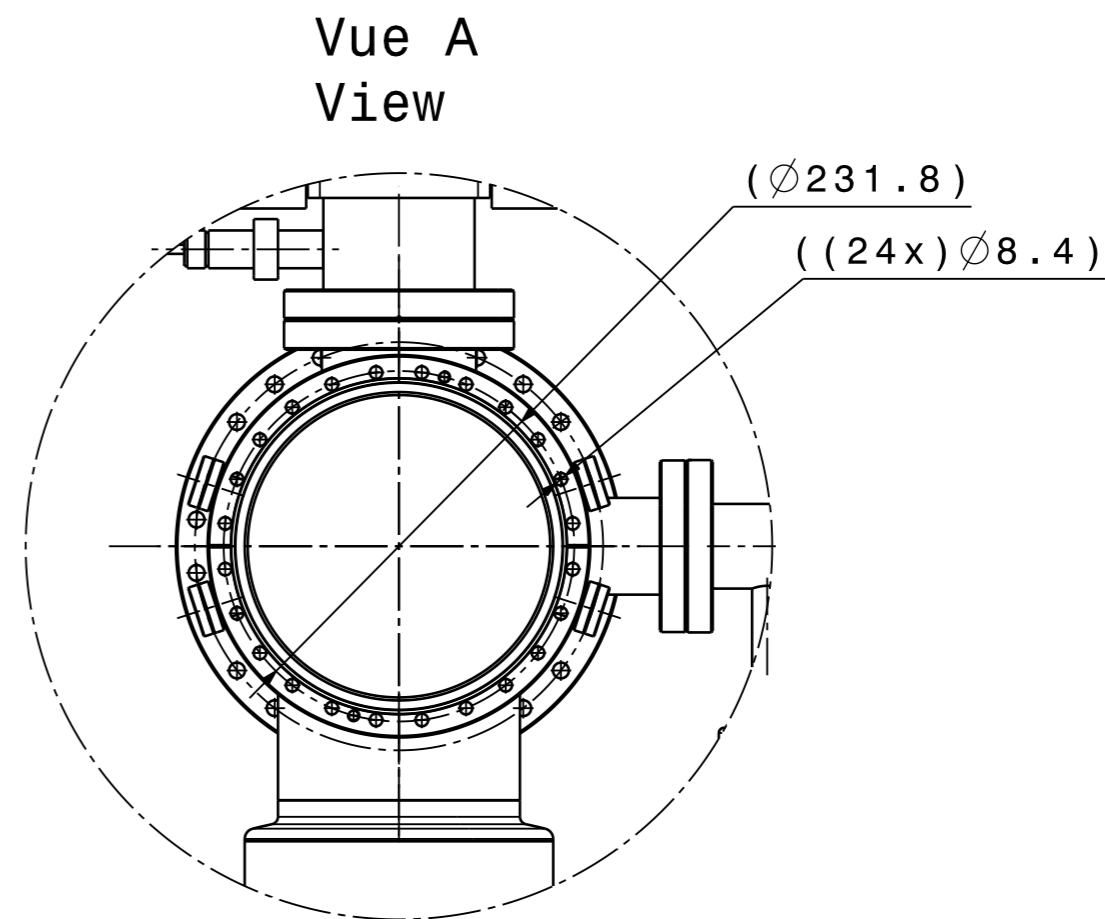
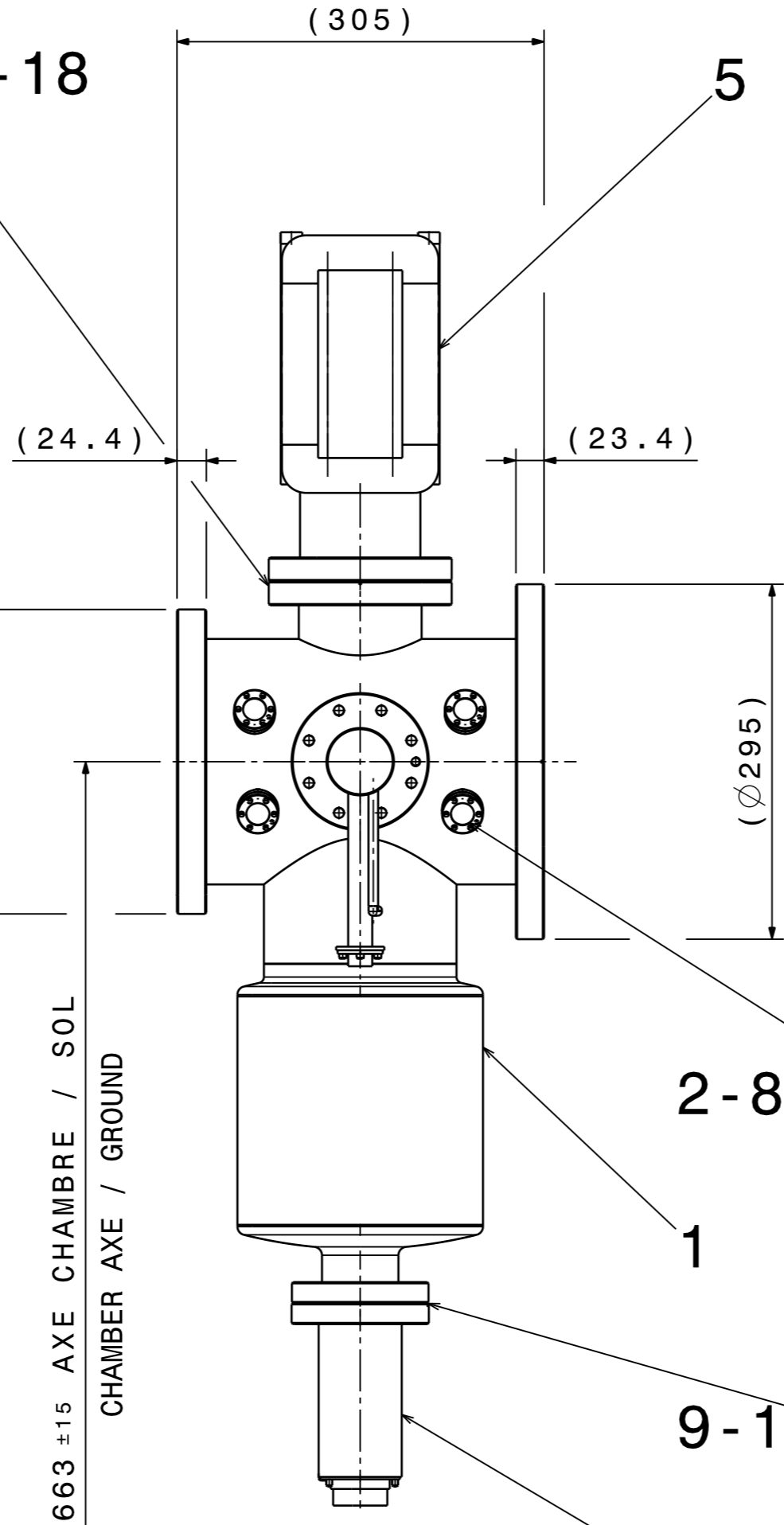
DESIGN: RIGIDITY, TOLERANCES  
 SELON NORMES ISO  
 DRAWING: RIGIDITY, TOLERANCES  
 ACCORDING TO ISO STANDARDS

PROJECTION

ORGANISATION EUROPEENNE POUR  
 LA RECHERCHE NUCLEAIRE  
 EUROPEAN ORGANIZATION FOR  
 NUCLEAR RESEARCH  
 LEI\LEI\VCPT001  
 THIS DRAWING MAY NOT BE USED FOR COMMERCIAL PURPOSES WITHOUT WRITTEN AUTHORIZATION



10-14-16-18



|    |   |    |              |                 |
|----|---|----|--------------|-----------------|
| 64 | PLAIN WASHER M8                                 | 18 | ST. STEEL A4 | 47.78.15        |
|    | RONDELLE PLATE M8                               |    | AC. INOX A4  | 116.5           |
| 96 | PLAIN WASHER M4                                 | 17 | ST. STEEL A4 | 47.78.15        |
|    | RONDELLE PLATE M4                               |    | AC. INOX A4  | 108.5           |
| 32 | HEXAGON NUT M8                                  | 16 | ST. STEEL A4 | 47.43.78        |
|    | ECROU HEXAGONAL M8                              |    | AC. INOX A4  | 108.4           |
| 48 | HEXAGON NUTS M4                                 | 15 | ST. STEEL A4 | 47.43.78        |
|    | ECROU HEXAGONAL M4                              |    | AC. INOX A4  | 104.8           |
| 16 | HEXAGONAL HEAD SCREW M8x55                      | 14 | ST. STEEL A4 | 47.62.83        |
|    | VIS A TETE HEXAGONALE M8x55                     |    | AC. INOX A4  | 122.3           |
| 16 | HEXAGONAL HEAD SCREW M8x45                      | 13 | ST. STEEL A4 | 47.62.83        |
|    | VIS A TETE HEXAGONALE M8x45                     |    | AC. INOX A4  | 118.9           |
| 48 | HEXAGONAL HEAD SCREW M4x20                      | 12 | ST. STEEL A4 | 47.62.83        |
|    | VIS A TETE HEXAGONALE M4x20                     |    | AC. INOX A4  | 004.8           |
|    |   | 11 |              |                 |
| 1  | SEAL METAL FOR UHV FLANGE DN 100                | 10 | CuOFS 0,1 AG | 18.60.55        |
|    | JOINT METAL POUR BRIDE UHV DN100                |    | CuOFS 0,1 AG | 860.4           |
| 2  | SEAL METAL FOR UHV FLANGE DN 63                 | 9  | CuOFS 0,1 AG | 18.60.55        |
|    | JOINT METAL POUR BRIDE UHV DN 63                |    | CuOFS 0,1 AG | 855.1           |
| 8  | SEAL METAL FOR UHV FLANGE DN 16                 | 8  | CuOFS 0,1 AG | 18.60.55        |
|    | JOINT METAL. POUR BRIDE UHV DN 16               |    | CuOFS 0,1 AG | 840.8           |
|    |   | 7  |              |                 |
| 1  | IONISATION GAUGE (VGI)                          | 6  |              | SVT. 305        |
|    | JAUGE DE IONISATION (VGI)                       |    |              |                 |
| 1  | ION PUMP (VPI60)                                | 5  |              | VARIAN 911.5034 |
|    | POMPE IONIQUE 60 L/S (VPI60)                    |    |              |                 |
| 1  | SUBLIMATION PUMP (VPS)                          | 4  |              | PS_VMPUM001     |
|    | POMPE A SUBLIMATION (VPS)                       |    |              |                 |
|    |   | 3  |              |                 |
| 8  | UHV FLANGE, ROTATABLE 34/16 SCEM 18.60.18.350.9 | 2  |              | STDVUFHV0004    |
|    | BRIDE ROTATIVE 34/16 SCEM 18.60.18.350.9        |    |              |                 |
| 1  | VACUUM CHAMBER WITH PICK UP                     | 1  |              | LEIVCPT0001     |
|    | CHAMBRE A VIDE AVEC PIQUAGE                     |    |              |                 |

| Torque Screw A4-70 for general mechanical assembly          |     |     |     |     |      |     |     |     |     |
|---|-----|-----|-----|-----|------|-----|-----|-----|-----|
| Serrage pour du A4-70 a sec ( coeff. frottement $\mu=0.2$ ) |     |     |     |     |      |     |     |     |     |
| Thread  | M3  | M4  | M5  | M6  | M8   | M10 | M12 | M14 | M16 |
| Couple de serrage<br>Tightening torque<br>Nm                | 1.1 | 2.6 | 5.1 | 8.8 | 21.4 | 44  | 74  | 119 | 183 |

| QUANT. | DESCRIPTION                             | POS | MAT. | OBSERVATIONS     | REF. CERN |
|--------|---|-----|------|------------------|-----------|
|        | ENS/ASS                                 |     |      | S. ENS / S. ASS  |           |
|        | Assembly of vacuum chamber pumping tank |     |      |                  |           |
|        | <b>PUMP TANK EQUIPPED ASSEMBLY</b>      |     |      |                  |           |
|        | <b>CHAMBRE A VIDE EQUIPEE ENSEMBLE</b>  |     |      |                  |           |
|        |   |     |      | REPLACE/REPLACES |           |

|  |   |          |                      |   |
|--|---|----------|----------------------|---|
|  | NON VALABLE POUR EXECUTION<br>NOT VALID FOR EXECUTION   | QAC<br>- | LEILVCPT0001         | SIZE IND.<br>2  |
|  | Assembly of vacuum chamber pumping tank<br>PUMP TANK EQUIPPED ASSEMBLY<br>CHAMBRE A VIDE EQUIPEE ENSEMBLE |          | ECHELLE SCALE<br>1:5 | DES/DRA. ACROTECNA 2006-07-19<br>CONTROLLED<br>RELEASED<br>APPROVED<br>LEI\VCPT0\LEILVCPT0001 |